



Focusing on Quality with Performance

Thursday, February 28, 2019

1:00 P.M. CST • AT THE RANCH IN Palisade, NE

Bear Mountain Angus Ranch

18TH ANNUAL BULL SALE



Sale Day Phones

Brian cell - 308.737.6213

Tiffany cell - 308.737.6230

Brian, Tiffany, Reagan & Mckinley Stoller

35789 Highway 6 • Palisade, NE 69040 • (308) 285-3313 (Home & Fax)

Email: bearmtnangus@msn.com • www.bearmountainangus.com

General Information

AUCTIONEER:

Kyle Schow 308-289-3772

SPECIAL REPRESENTATIVES:

Drew Feller - 402-841-4215 American Angus Association
 Jim Gies - 970-590-0500 Western Livestock Journal
 Randy Rasby - 308-539-6195 Livestock Plus
 Allen Sears - 970-396-7521 Western Ag Reprter
 Chris Beutler - 402-308-8244 Midwest Messenger

SALE CONSULTANTS:

Dallas Wolthemath 308-390-6400
 Jay Nordhausen 308-289-1548
 Bob Tiedeman 308-520-0500
 Jake Tiedeman 308-520-0499
 Tyler Bobinmyer 308-737-0140

SALE TIME:

The sale will be held Thursday, February 28, 2019 at 1:00 p.m. CST.

SALE LOCATION & DIRECTIONS:

The sale will be held at the Bear Mountain Angus sale barn in Palisade, NE, located 2 miles west of Palisade on Highway 6. The bulls are on the north side of the highway.

ACCOMMODATIONS:

We will be happy to make a reservation at one of the following locations:
 Horse Creek Inn (McCook - 30 min East) *ask for BMAR sale rate.* (308) 345-4505
 Imperial Inn (Imperial - 30 min West) (308) 882-4880
 Hayes Center Bed & Breakfast (Hayes Center - 15 min North) (308) 286-3245
 Midway Motel (Connie Brott) (Hayes Center - 15 min North) (308) 350-5001

TERMS & CONDITIONS:

The cattle will sell under the suggested terms and conditions adopted by the American Angus Association effective March 21, 1994. Except for those stated in the terms and conditions, there are no warranties, either expressed or implied, as to the merchantability or fitness for a particular purpose with respect to the cattle being sold in this auction. The warranties and guarantee set forth in the "Terms and Conditions" are in lieu of all other warranties, either expressed or implied, and the remedies provided therein shall be the sole and exclusive remedy of the buyer (or any party claiming through the buyer) or any breach of warranty or guarantee therein provided and all other obligations available at the clerk's office sale day.

RETAINED INTEREST:

Bear Mountain will retain a 1/3 semen interest in all bulls in this sale. Buyers receive full possession and full salvage value.

INSPECTION OF CATTLE:

Sale cattle will be available for inspection any time at Bear Mountain Angus. Videos will be available on Superior Livestock website one week prior to the sale. Please log on as if you were viewing the sale to see the videos.

HERD HEALTH:

All cattle selling are on a complete health program and bulls are certified to be virgin bulls or to have passed a negative trich test prior to the sale. The cattle have been vaccinated and dewormed. All bulls have tested negative for BVDpi. Our herd veterinarian, Dr. Steve Pollmann - 308-394-5740, may also answer any questions you may have.

SEMEN TEST:

Every bull in the sale will have passed a Breeding Soundness Exam (BSE) unless he is under 14 months of age, but is guaranteed to pass before you turn him out. Young bulls who haven't passed by sale day will be noted on the update sheet as TYTT which means they are too young to test. All bulls are guaranteed to be fertile.

IDENTIFICATION OF CATTLE:

Ear tags on all sale cattle will correspond to lot numbers in this sale book.

ANNOUNCEMENTS:

Auction block announcements regarding the cattle selling in this sale take precedence over information listed in this sale book.

FOOD AND REFRESHMENTS:

A complimentary lunch will be served starting at 11:30 a.m. Donuts and coffee will be available as well in the morning.

LIABILITY:

All persons attending this sale do so at their own risk, and Bear Mountain assumes no liability, legal or otherwise, for any accidents which may occur.

INSURANCE:

Jim Gies with American Livestock Incorporated will be available to assist with mortality insurance for your purchases. (6 month - 4% & 12 month 6%) You may reach her at (970) 590-0500.

WINTERING OF BULLS:

The sellers will winter bulls selling, at the buyer's option, at a cost of \$2.00/ day per bull up to April 1st. Purchaser must obtain mortality insurance on all wintered bulls.

DELIVERY OF BULLS:

Free delivery on a single or combined purchase of \$3500 in a 300 mile radius to a central location at buyers risk. Pick up your purchases by March 2nd and receive a \$50 credit per bull.



www.superiorclicktobid.com

If you are unable to join us on sale day, the auction will be broadcast on Superior Livestock. We will have additional information on our web site (www.bearmountainangus.com) closer to sale day. It is recommended that you pre-register at www.superiorclicktobid.com prior to sale day to obtain buyer approval. A high speed internet connection is required for viewing and bidding. Live videos of the sale lots are also available on the Superior Livestock & Superior Click-To-Bid websites.

FOR BUYERS UNABLE TO ATTEND OUR SALE

Bear Mountain Angus provides a complete **SIGHT UNSEEN BUYERS SATISFACTION GUARANTEE** for all cattle selling in this sale. If you cannot attend in person, you may call or send bids to any of the representatives listed or directly to Bear Mountain Angus. You can also bid on cattle at Superior Click-To-Bid.com. Satisfaction guaranteed!

"Focusing on Quality with Performance"

Welcome to Bear Mountain Angus Ranch



Dear Fellow Cattlemen,

We appreciate you taking time to review our 2019 offering. Our slogan is "Focusing on Quality with Performance". We live by that saying, by breeding cattle with our fellow cattlemen in mind. We strive to breed cattle that are structurally sound and functional with plenty of muscle and capacity in a fairly moderate frame that still push the scale down and perform on the rail. Through our embryo program we have produced many full brothers, along with many $\frac{3}{4}$ & $\frac{1}{2}$ brothers utilizing artificial insemination, so you have the ability to breed a large number of cows with similar genetics to ensure a more consistent calf crop. You will find bulls at Bear Mountain who will work for different environments and scenarios.

We aren't selling any females in this sale this year since we had the mature cow herd dispersal back in November and would like to thank all who attended, bid and purchased females from us. It was a great success and we were honored to sell cattle clear from Tennessee all the way out to California and everywhere in between.

If you are unable to attend the sale we have provided you with the ability to bid and watch online at superiorlivestock.com's click to bid. All of the bulls will have videos for you to preview prior to the sale on the Superior website. As long as you have high speed internet all you need to do is sign up for our sale ahead of time and you will be able to bid in real time. If you have questions about how it works give me a call.

We look forward to seeing you on February 28th. We encourage you to stop by and look at the cattle prior to the sale and come early on the 28th and enjoy our complimentary Tri-Tip lunch. If you have any questions don't hesitate to call.

Sincerely,

Brian & Tiffany Stoller



The American Angus Hall of Fame
The World Angus Headquarters
Box 660, Smithville, MO 64089-0660
Phone (816) 532-0811
Fax (816) 532-0851
E-mail: angushall@angushall.com

Sale Management - Focusing on Quality with Performance!

On behalf of the American Angus Hall of Fame, it is a pleasure to be working with the Brian Stoller family on this great sale offering. Bear Mountain Angus Ranch needs no introduction to the Angus business, years and years of dedicated and committed breeding discipline have developed this program as one of the dominant herds from which to buy a service age bull.

Bear Mountain Angus Ranch is committed to breeding bulls with calving ease, performance, phenotype and added carcass merit. As you flip through the book, you will find a great set of genetics to select from that will add value to your program. If you are in need of a calving ease bull or a high-performance bull to add pounds and dollars to your pocket book, please plan to be with us on Thursday, February 28, 2019, in Palisade, Nebraska.

If you have any questions, we urge you to contact the ranch or the American Angus Hall of Fame at 816/532-0811.

Sincerely,



Tom Burke
816/853-2697



Kurt Schaff
816/520-6447



Jeremy Haag
816/516-1309

American Angus Association \$Value Indexes

\$Values are multi-trait selection indexes expressed in dollars per head, to assist commercial beef producers by adding simplicity to genetic selection decisions. A \$Value has meaning only when used in comparison to the \$Value of another animal. For example, just as with EPDs, variation in \$Values between animals indicates average expected differences in the relative value of progeny if random mating is assumed and the calves are exposed to the same environment.

How do I use them?

\$Values should be used to complement the criteria that producers already use when selecting bulls.

The \$Values are not designed to be driven by a single trait, as an index is multi-trait by design. These selection tools are the result of the application of industry-relevant market values to Angus genetics for preweaning, feedlot, and carcass merit.

The \$W, \$F, \$G and \$B values on individual animals and the Sire Evaluation Report may be viewed at www.angus.org.

American Angus Association
 3201 Frederick Avenue ■ St. Joseph, MO 64506
 816-383-5100
ahir@angus.org ■ www.angus.org

\$Value			
\$W	\$F	\$G	\$B
+43.34	+39.20	+31.86	+105.91

Weaned Calf Value (\$W): an index expressed in dollars per head, is the expected average difference in future progeny performance for preweaning merit. \$W includes both revenue and cost adjustments associated with differences in birth weight, weaning direct growth, maternal milk, and mature cow size.

Feedlot Value (\$F): an index expressed in dollars per head, is the expected average difference in future progeny performance for postweaning performance compared to progeny of other sires.

Grid Value (\$G): an index expressed in dollars per head, is the expected average difference in future progeny performance for carcass grid merit compared to progeny of other sires.

Beef Value (\$B): an index expressed in dollars per head, is the expected average difference in future progeny performance for postweaning and carcass value compared to progeny of other sires. The \$B value combines the contributions of \$F and \$G.



Bear Mountain Angus has chosen to send in DNA on select bulls this year to help improve the predictability of their offspring. However, the animals own performance and measures along with their ancestor's records are very important, especially when they are run in large contemporary groups as they are here at Bear Mountain.

Genomic results are a way to enhance predictability of current selection tools, to achieve more accuracy on EPDs for younger animals, and to characterize genetics for traits where it's difficult to measure the animal's own performance for the trait, such as carcass traits in breeding stock or maternal traits in bulls. With the investment in genomic technology, this means that in addition to the pedigree, performance and progeny information that are used in the calculation and reporting of Angus EPDs, genomic test results have also been incorporated into the EPD.

IMPORTANCE OF PHENOTYPIC PERFORMANCE DATA

Genomic results are used as indicator traits in the evaluations to compute EPDs. Genomics do not completely describe the variation in the traits of interest. Breeders sometimes ask if it is no longer necessary to collect weights and measures (e.g., weaning weights, scan data, carcass measures). On the contrary, phenotypic measures collected by Angus breeders continue to be an important part in further development of improved genomic panels and the refinement of this technology over time, not to mention an important component in EPD calculation.

If you see the above logo under a lot number, it means that they have been genomically tested and their EPDs are genomically enhanced.

All our bulls are tested and confirmed BVD-PI Free

Newly purchased bulls entering your herd are a potential health risk. Bovine viral diarrhea virus is the most costly contributor to respiratory and reproductive disease in beef cattle. Identifying BVD Persistently Infected (PI) animals with diagnostic testing is one of the best tools to manage this disease. That's why we notch and only sell bulls that are tested BVD-PI Free.

We know the health of the bulls you're buying is just as crucial as the genetics they provide. So it's important to us that you have the peace-of-mind you need to buy our bulls with health assurance and confidence.



Notch and Know™

THE BEAR MOUNTAIN DISCOUNT

2% - Repeat Buyers

(applicable if purchases were made in 2016 or 2017)

5% - 10 bulls or more

The bulls have been developed on an High Forage, Non-Starch Diet. By developing them this way, their digestive system will not have a transition period when turned out on grass, and in turn we believe they will do a better job of getting cows bred. This is also better on their system and should make for more longevity and a sounder set of feet and legs. So you will not see a bunch of over conditioned bulls here.

The bulls have been Semen tested, BVDpi tested negative, Performance tested and tested for genetic defects if necessary.

If you have any questions about any of this feel free to ask.

Once again the bulls are guaranteed 100%.

Breed Averages for Non-Parent Angus Bulls

CED	BW	WW	YW	Milk	SC	CW	Marb	RE	Fat	\$W	\$F	\$G	\$B
+6	+1.3	+52	+92	+24	+74	+38	+53	+52	+0.10	+47.85	+48.70	+34.09	+119.16

Yearling Bulls



Top 1%
WW, YW, \$W & \$F

Top 10%
CED, RADG & \$B

Top 15%
BW & DOC

Top 20%
SC, Milk, CW & RE



Bear Mtn Barbara 3032
Grand Dam of Lot 1



Bear Mtn Ruger 8649

Tattoo: 8649 Calved: 02/08/18 Reg No: 19309333

Connealy Armory
Connealy Ruger
Precka of Conanga 3201
KG Justified 3023
Bear Mtn Barbara 6574
Bear Mtn Barbara 3032

\$Values	
\$W:	91.73
\$F:	132.43
\$G:	39.48
\$B:	166.84



BW	CED	BEPD	WEPD	YEPD	MILK	MARB	REA
66	+12	-0.8	+83	+149	+29	+0.63	+0.74



Bear Mtn Ruger 8594

Tattoo: 8594 Calved: 01/28/18 Reg No: 19309317

Connealy Armory
Connealy Ruger
Precka of Conanga 3201
EF Complement 8088
Bear Mtn Barbara 5200
Bear Mtn Barbara 8106

\$Values	
\$W:	79.02
\$F:	138.66
\$G:	45.04
\$B:	193.12



BW	CED	BEPD	WEPD	YEPD	MILK	MARB	REA
82	+9	+0.9	+87	+151	+17	+0.89	+0.74

- Calving Ease Bull • Birth ratio 90 Weaning ratio 104
- Adj WW 725
- Maternal Granddams Production: Weaning 4@108 Yearling 2@109 REA 3@107
- His maternal grand dam is a Pathfinder and traces back to the same cow that produced Owyhee.
- His dam has impressed us enough that she has already become a donor.
- This bull has all the right parts to be a big time herd sire with potential to sell lots of semen.

- Calving Ease Bull • Weaning ratio 106 • Adj WW 738
- Maternal Granddams Production: Birth 6@100 Weaning 6@103 Yearling 5@102 REA 28@100
- His maternal grand dam is a full sister to the \$50,000 Bear Mtn Owyhee 5012.

Top 1% WW, YW, DOC, \$F & \$B

Top 2% \$W **Top 15% Marb**

Top 4% CW **Top 20% RE & \$G**

Reference Sire



CONNELY RUGER

Birth Date: 1/28/16 Tattoo: 6507 Reg. 18538580

Connealy Arsenal 2174
Connealy Armory
Black Rice of Conanga 9529
EF Authentic 0829
Precka of Conanga 3201
Precious of Conanga 0484

\$ Values	
\$W:	+75.55
\$F:	+127.00
\$G:	+40.27
\$B:	+171.99

CED	BW	WW	YW	Milk	SC	CW	Marb	RE	Fat
+8	+1.5	+79	+146	+26	+1.09	+56	+0.64	+0.65	-0.003



Bear Mtn Jamie 4101
Grand Dam of Lot 3



Bear Mtn Ruger 8614

Tattoo: 8614 Calved: 01/31/18 Reg No: 19309318

Connealy Armory
Connealy Ruger
Precka of Conanga 3201
BT Crossover 758N
Bear Mtn Jamie 6905
Bear Mtn Jamie 4101

\$Values	
SW:	64.55
SF:	59.21
\$G:	39.77
\$B:	115.45



BW	CED	BEPD	WEPD	YEPD	MILK	MARB	REA
78	+6	+2.5	+61	+105	+27	+0.53	+0.58

- Weaning ratio 102 • Adj WW 703
- Maternal Granddams Production: Birth 4@99 Weaning 4@110 Yearling 4@105 REA 42@99



Bear Mtn Ruger 8687

Tattoo: 8687 Calved: 02/16/18 Reg No: 19309323

Connealy Armory
Connealy Ruger
Precka of Conanga 3201
Circle A Brilliance 1189
Bear Mtn Rita 6763
SQ Rita 128R of 3540 E161

\$Values	
SW:	58.98
SF:	109.08
\$G:	38.23
\$B:	173.86



BW	CED	BEPD	WEPD	YEPD	MILK	MARB	REA
86	+3	+1.6	+61	+122	+29	+0.57	+0.70

- Maternal Granddams Production: Weaning 6@111 Yearling 3@103 IMF 10@107 REA 10@105
- A maternal brother to his dam was the 2nd high seller last year going to Malson Angus.



Bear Mtn Ruger 8624

Tattoo: 8624 Calved: 02/02/18 Reg No: 19309329

Connealy Armory
Connealy Ruger
Precka of Conanga 3201
Bear Mtn Titan 4045
Bear Mtn Black Lass 6661
Bear Mtn Black Lass 4132

\$Values	
SW:	75.57
SF:	118.14
\$G:	27.38
\$B:	156.17



BW	CED	BEPD	WEPD	YEPD	MILK	MARB	REA
78	+10	+1.9	+76	+140	+30	+0.34	+0.53

- Calving Ease Bull
- Weaning ratio 119 • Adj WW 823
- Maternal Granddams Production: Birth 2@97 Weaning 2@103 Yearling 1@102 REA 1@107



Bear Mtn RRS Ruger 8690

Tattoo: 8690 Calved: 02/17/18 Reg No: 19309346

Connealy Armory
Connealy Ruger
Precka of Conanga 3201
Vin-Mar O'Reilly Factor
Reagan's Lady 2046
Reagan's Lady 0096

\$Values	
SW:	74.18
SF:	165.61
\$G:	20.14
\$B:	186.93



BW	CED	BEPD	WEPD	YEPD	MILK	MARB	REA
89	-1	+4.5	+95	+166	+23	+0.26	+0.63

- Weaning ratio 104 • Adj WW 719
- Dams Production Record: Weaning 5@102 Yearling 2@105 REA 3@101

Top 1% WW, YW, RADG, CW, \$F & \$B

Yearling Bulls



Top 2%
WW, YW & \$W

Top 4% CW



Bear Mtn Barbara 3032
Dam of Lot 7



Bear Mtn Whitlock 8505

Tattoo: 8505 Calved: 01/11/18 Reg No: 19309030

S Chisum 6175
S Whitlock 179
S Pride Anna 709
S A V Pioneer 7301
Bear Mtn Barbara 3032
Bear Mtn Barbara 9021

\$Values	
\$W:	78.61
\$F:	93.00
\$G:	28.47
\$B:	152.48



BW	CED	BEPD	WEPD	YEPD	MILK	MARB	REA
82	+3	+2.5	+76	+134	+30	+0.54	+0.41



Bear Mtn Whitlock 8537

Tattoo: 8537 Calved: 01/18/18 Reg No: 19309051

S Chisum 6175
S Whitlock 179
S Pride Anna 709
Bear Mtn Owyhee 5012
Bear Mtn Miss Manor 2139
Bear Mtn Miss Manor 8058

\$Values	
\$W:	59.42
\$F:	88.10
\$G:	32.17
\$B:	157.76



BW	CED	BEPD	WEPD	YEPD	MILK	MARB	REA
87	+5	+1.9	+66	+118	+27	I+0.53	I+0.56

- Birth ratio 100 Weaning ratio 115
- Adj WW 802
- Dams Production Record: Weaning 4@108 Yearling 2@109 REA 3@107
- His dam is a Pathfinder.

- Weaning ratio 110 • Adj WW 767
- Dams Production Record: Birth 4@99 Weaning 4@103 Yearling 2@101 IMF 3@133 REA 3@101

Reference Sire



S WHITLOCK 179

Birth Date: 3/21/11 Tattoo: 179 Reg. 17007891

S Alliance 3313
S Chisum 6175
S Gloria 464
R&S Expedition 1404
S Pride Anna 709
S pride Anna 567

\$ Values	
\$W:	+70.33
\$F:	+103.46
\$G:	+20.62
\$B:	+163.28

CED	BW	WW	YW	Milk	SC	CW	Marb	RE	Fat
+8	+1.0	+74	+136	+26	+1.11	+74	+0.38	+0.60	+0.058



Bear Mtn Erica 1012
Dam of Lot 9



Bear Mtn Genuine 5022
Maternal brother to Lot 9



Lot 9

Top 2% YW, CEM, CW, \$W & \$F Top 4% WW Top 10% \$B



Bear Mtn Whitlock 8620

Tattoo: 8620 Calved: 02/02/18 Reg No: 19309059

S Chisum 6175
S Whitlock 179
S Pride Anna 709
Vin-Mar O'Reilly Factor
Bear Mtn Erica 1012
Bear Mtn Erica 9080

\$Values	
SW:	79.35
SF:	111.85
\$G:	20.06
\$B:	166.15



BW	CED	BEPD	WEPD	YEPD	MILK	MARB	REA
85	+9	+0.5	+73	+134	+30	+0.39	+0.36



Bear Mtn Whitlock 8590

Tattoo: 8590 Calved: 01/28/18 Reg No: 19309005

S Chisum 6175
S Whitlock 179
S Pride Anna 709
KG Justified 3023
Bear Mtn Judy 6535
Bear Mtn Judy 3092

\$Values	
SW:	80.94
SF:	98.64
\$G:	25.26
\$B:	152.95



BW	CED	BEPD	WEPD	YEPD	MILK	MARB	REA
77	+4	+2.2	+79	+134	+28	+0.42	+0.62

- Calving Ease Bull • Weaning ratio 110
- Adj WW 757
- Dams Production Record: Birth 6@99 Weaning 6@106 Yearling 4@104 IMF 4@129
- He is a maternal brother to Bear Mtn Genuine 5022 who sold to Alta Genetics.

- Weaning ratio 108 • Adj WW 745
- Maternal Granddams Production: Weaning 4@102 Yearling 2@109
- His dam is a full sister to Bear Mtn Justify who sold to Keyes Angus for \$10,500 in last years sale.



Bear Mtn Whitlock 8568

Tattoo: 8568 Calved: 01/25/18 Reg No: 19309008

S Chisum 6175
S Whitlock 179
S Pride Anna 709
KG Justified 3023
BearMtnKMF Forever Lady 6515
KMF Forever Lady Z11

\$Values	
SW:	76.89
SF:	87.68
\$G:	30.58
\$B:	152.83



BW	CED	BEPD	WEPD	YEPD	MILK	MARB	REA
71	+10	-1.1	+72	+122	+27	+0.62	+0.37



Bear Mtn Whitlock 8602

Tattoo: 8602 Calved: 01/28/18 Reg No: 19309006

S Chisum 6175
S Whitlock 179
S Pride Anna 709
KG Justified 3023
Bear Mtn Miss Manor 6522
Bear Mtn Miss Manor 2139

\$Values	
SW:	79.80
SF:	71.25
\$G:	28.10
\$B:	154.32



BW	CED	BEPD	WEPD	YEPD	MILK	MARB	REA
69	+6	+0.1	+62	+103	+38	+0.40	+0.65

- Calving Ease Bull • Birth ratio 96
- Maternal Granddams Production: Weaning 3@101 IMF 3@116

- Calving Ease Bull • Birth ratio 84
- Maternal Granddams Production: Birth 4@99 Weaning 4@103 Yearling 2@101 IMF 3@103 REA 3@101

Yearling Bulls



**Top 1%
WW, YW, DOC,
CW, \$W & \$F**

**Top 5%
Milk & \$B**

Lot 13



Bear Mtn Whitlock 8518

Tattoo: 8518 Calved: 01/14/18 Reg No: 19309033

S Chisum 6175
S Whitlock 179
S Pride Anna 709
Vin-Mar O'Reilly Factor
Bear Mtn Forever Lady 3200
Boyd Forever Lady 502

\$Values	
\$W:	89.66
\$F:	126.31
\$G:	13.55
\$B:	170.51

13
ANGUSGS
Powered by Nengen Genetics

BW	CED	BEPD	WEPD	YEPD	MILK	MARB	REA
81	+8	+1.1	+83	+149	+33	+0.16	+0.68

- Calving Ease Bull • Birth ratio 100 Weaning ratio 116
- Adj WW 808
- Dams Production Record: Weaning 2@114 REA 2@101



Bear Mtn Whitlock 8607

Tattoo: 8607 Calved: 01/30/18 Reg No: 19309011

S Chisum 6175
S Whitlock 179
S Pride Anna 709
Connealy Black Granite
Bear Mtn Entense 5244
Bear Mtn Entense 8314

\$Values	
\$W:	72.30
\$F:	78.89
\$G:	29.57
\$B:	156.02

15
ANGUSGS
Powered by Nengen Genetics

BW	CED	BEPD	WEPD	YEPD	MILK	MARB	REA
70	+12	-1.1	+65	+114	+27	+0.43	+0.68

- Calving Ease Bull • Birth ratio 94
- REA 4@101



Bear Mtn Whitlock 8692

Tattoo: 8692 Calved: 02/17/18 Reg No: 19309036

S Chisum 6175
S Whitlock 179
S Pride Anna 709
Vin-Mar O'Reilly Factor
Bear Mtn Ellunas Elite 3054
Bear Mtn Ellunas Elite 1022

\$Values	
\$W:	61.51
\$F:	91.64
\$G:	24.03
\$B:	146.49

14
ANGUSGS
Powered by Nengen Genetics

BW	CED	BEPD	WEPD	YEPD	MILK	MARB	REA
84	+7	+1.3	+68	+123	+26	I+0.34	I+0.56

- Weaning ratio 105
- Adj WW 727
- Dams Production Record: Birth 4@96 Yearling 1@104 REA 3@100



Bear Mtn Whitlock 8598

Tattoo: 8598 Calved: 01/28/18 Reg No: 19309007

S Chisum 6175
S Whitlock 179
S Pride Anna 709
Sitz Wisdom 481T
Bear Mtn Ruby 6508
44 Ruby 511X

\$Values	
\$W:	70.31
\$F:	83.80
\$G:	21.24
\$B:	138.01

16
ANGUSGS
Powered by Nengen Genetics

BW	CED	BEPD	WEPD	YEPD	MILK	MARB	REA
79	+6	+1.1	+64	+115	+31	+0.42	+0.20

- For use on larger framed heifers and cows.
- Weaning ratio 105
- Adj WW 736
- Maternal Granddams Production: Birth 5@93 REA 10@101



Bear Mtn Enchantress 5039
Dam of Lot 17 & 18



Bear Mtn Cowboy Up 8668

Tattoo: 8668 Calved: 02/13/18 Reg No: 19309293

HA Outside 3008
HA Cowboy Up 5405
 HA Blackcap Lady 1602
 Connealy In Focus 4925
Bear Mtn Enchantress 5039
 Bear Mtn Enchantress 1005

\$Values	
\$W:	53.39
\$F:	90.06
\$G:	19.67
\$B:	131.03

17



BW	CED	BEPD	WEPD	YEPD	MILK	MARB	REA
92	+1	+4.2	+73	+129	+18	+0.16	+0.74



Bear Mtn Cowboy Up 8669

Tattoo: 8669 Calved: 02/13/18 Reg No: 19309294

HA Outside 3008
HA Cowboy Up 5405
 HA Blackcap Lady 1602
 Connealy In Focus 4925
Bear Mtn Enchantress 5039
 Bear Mtn Enchantress 1005

\$Values	
\$W:	68.40
\$F:	114.83
\$G:	33.27
\$B:	171.06

18



BW	CED	BEPD	WEPD	YEPD	MILK	MARB	REA
77	+6	+2.5	+82	+142	+20	+0.56	+0.48

- Weaning ratio 102
- Maternal Granddams Production: Birth 5@99 Weaning 5@103 Yearling 3@101 IMF 4@109 REA 4@113 (She is a Pathfinder)

- Birth ratio 93
- Maternal Granddams Production: Birth 5@99 Weaning 5@103 Yearling 3@101 IMF 4@109 REA 4@113 (She is a Pathfinder)

Top 1% WW, YW & \$F

Top 5% \$B

HA COWBOY UP 5405

Birth Date: 1/30/15 Tattoo: 5405 Reg. 18286467

KG Solution 0018
HA Outside 3008
 HA Ever lady 1575
 Sitz Upward 307R
HA Blackcap Lady 1602
 HA Blackcap Lady 5515

\$ Values	
\$W:	+48.85
\$F:	+111.85
\$G:	+26.28
\$B:	+161.66

CED	BW	WW	YW	Milk	SC	CW	Marb	RE	Fat
+8	+2.5	+76	+138	+10	+1.33	+62	+0.33	+0.54	-.011



Reference Sire

Yearling Bulls



Bear Mtn Lady Eraline 1038
Pathfinder Dam of Lots 19 - 21



Bear Mtn Cowboy Up 8872

Tattoo: 8872 Calved: 02/13/18 Reg No: 19309360

HA Outside 3008
HA Cowboy Up 5405
HA Blackcap Lady 1602
Vin-Mar O'Reilly Factor
Bear Mtn Lady Eraline 1038
Bear Mtn Lady Eraline 9054

\$Values	
SW:	67.02
SF:	133.87
SG:	31.69
SB:	181.83



BW	CED	BEPD	WEPD	YEPD	MILK	MARB	REA
90	+6	+3.3	+85	+146	+14	+0.47	+0.60

- Adj WW 728
- Dams Production Record: Birth 6@97 Weaning 6@106 Yearling 3@104 IMF 5@127 REA 5@106



Bear Mtn Cowboy Up 8873

Tattoo: 8873 Calved: 02/03/18 Reg No: 19309361

HA Outside 3008
HA Cowboy Up 5405
HA Blackcap Lady 1602
Vin-Mar O'Reilly Factor
Bear Mtn Lady Eraline 1038
Bear Mtn Lady Eraline 9054

\$Values	
SW:	54.68
SF:	86.48
SG:	31.95
SB:	143.33



BW	CED	BEPD	WEPD	YEPD	MILK	MARB	REA
87	+4	+1.9	+66	+120	+19	+0.38	+0.61

- Adj WW 772
- Dams Production Record: Birth 6@97 Weaning 6@106 Yearling 3@104 IMF 5@127 REA 5@106



Bear Mtn Cowboy Up 8874

Tattoo: 8874 Calved: 02/03/18 Reg No: 19309362

HA Outside 3008
HA Cowboy Up 5405
HA Blackcap Lady 1602
Vin-Mar O'Reilly Factor
Bear Mtn Lady Eraline 1038
Bear Mtn Lady Eraline 9054

\$Values	
SW:	46.32
SF:	104.80
SG:	36.90
SB:	170.41



BW	CED	BEPD	WEPD	YEPD	MILK	MARB	REA
82	+3	+3.7	+71	+130	+15	+0.59	+0.67

- Adj WW 730
- Dams Production Record: Birth 6@97 Weaning 6@106 Yearling 3@104 IMF 5@127 REA 5@106



Bear Mtn Cowboy Up 8507

Tattoo: 8507 Calved: 01/12/18 Reg No: 19309372

HA Outside 3008
HA Cowboy Up 5405
HA Blackcap Lady 1602
Bear Mtn Owyhee 5012
Bear Mtn Pride 9044
Bear Mtn Pride 4157

\$Values	
SW:	46.19
SF:	93.23
SG:	24.26
SB:	163.45



BW	CED	BEPD	WEPD	YEPD	MILK	MARB	REA
86	+5	+3.9	+68	+119	+16	+0.34	+0.50

- Weaning ratio 100
- Dams Production Record: Weaning 8@100 Yearling 5@101



Bear Mtn Cowboy Up 8538

Tattoo: 8538 Calved: 01/18/18 Reg No: 19307679

HA Outside 3008
HA Cowboy Up 5405
HA Blackcap Lady 1602
Bear Mtn Owyhee 5012
Bear Mtn Bell 3174
Bear Mtn Bell 25L

\$Values	
SW:	53.56
SF:	69.28
SG:	39.16
SB:	136.53



BW	CED	BEPD	WEPD	YEPD	MILK	MARB	REA
81	+7	+2.8	+72	+112	+10	+0.62	+0.40

- Weaning ratio 101
- Dams Production Record: Birth 4@98 IMF 3@112



Bear Mtn Cowboy Up 8585

Tattoo: 8585 Calved: 01/27/18 Reg No: 19309313

HA Outside 3008
HA Cowboy Up 5405
HA Blackcap Lady 1602
Sitz Wisdom 481T
Bear Mtn Bell 4046
Bear Mtn Bell 0062

\$Values	
SW:	54.89
SF:	89.78
SG:	22.23
SB:	129.26



BW	CED	BEPD	WEPD	YEPD	MILK	MARB	REA
75	+13	+0.1	+60	+112	+19	+0.21	+0.42

- Calving Ease Bull
- Birth ratio 93 Weaning ratio 101
- Adj WW 705
- His dam has 3@98 for birth.



Bear Mtn Cowboy Up 8689

Tattoo: 8689 Calved: 02/17/18 Reg No: 19309353

HA Outside 3008
HA Cowboy Up 5405
HA Blackcap Lady 1602
EXAR 263C
Bear Mtn Jamie 2319
Bear Mtn Jamie 4101

\$Values	
SW:	46.13
SF:	116.10
SG:	29.41
SB:	152.50



BW	CED	BEPD	WEPD	YEPD	MILK	MARB	REA
82	+0	+4.0	+72	+134	+15	+0.38	+0.30

- Birth ratio 100 Weaning ratio 104
- Adj WW 715
- Dams Production Record: Birth 5@98 Weaning 5@102

Yearling Bulls

EPDs as of 2/8/19



Top 2% \$F

Top 3% YW

Top 4% WW & SW

Top 20% CED

Lot 26



Bear Mtn Fortress 8576

Tattoo: 8576 Calved: 01/25/18 Reg No: 19309083

Connealy Consensus
K C F Bennett Fortress
Thomas Patricia 9705

\$Values	
\$W:	73.79
\$F:	106.93
\$G:	36.53
\$B:	144.90

26
ANGUSGS
Powered by Nogen Genetics

Connealy Earnan 076E
Bear Mtn Bell 5172
Bear Mtn Bell 2027

BW	CED	BEPD	WEPD	YEPD	MILK	MARB	REA
69	+10	+0.5	+73	+130	+21	+0.52	+0.52

- Calving Ease Bull
- Birth ratio 88
- Dams Production Record: Birth 2@92 REA 1@102



Bear Mtn Fortress 8645

Tattoo: 8645 Calved: 02/07/18 Reg No: 19309074

Connealy Consensus
K C F Bennett Fortress
Thomas Patricia 9705

\$Values	
\$W:	83.69
\$F:	88.59
\$G:	44.32
\$B:	132.65

28
ANGUSGS
Powered by Nogen Genetics

Connealy Capitalist 028
Bear Mtn Miss Manor 6597
Bear Mtn Miss Manor 4027

BW	CED	BEPD	WEPD	YEPD	MILK	MARB	REA
70	+8	+0.6	+75	+123	+23	+0.69	+0.46

- Calving Ease Bull
- Birth ratio 95 Weaning ratio 103
- Adj WW 711
- Maternal Granddams Production: Birth 3@91 Weaning 3@100 Yearling 1@102 REA 2@104



Bear Mtn Fortress 8634

Tattoo: 8634 Calved: 02/04/18 Reg No: 19309075

Connealy Consensus
K C F Bennett Fortress
Thomas Patricia 9705

\$Values	
\$W:	78.85
\$F:	81.30
\$G:	47.47
\$B:	152.74

27
ANGUSGS
Powered by Nogen Genetics

MAR Innovation 251
Bear Mtn Rose 6582
Bear Mtn Rose 2164

BW	CED	BEPD	WEPD	YEPD	MILK	MARB	REA
82	+8	+1.1	+68	+118	+34	+0.88	+0.56

- Calving Ease Bull
- Birth ratio 95 Weaning ratio 105
- Adj WW 722
- Dams Production Record: Weaning 6@104 Yearling 3@102



Bear Mtn Fortress 8713

Tattoo: 8713 Calved: 02/24/18 Reg No: 19309073

Connealy Consensus
K C F Bennett Fortress
Thomas Patricia 9705

\$Values	
\$W:	67.01
\$F:	75.18
\$G:	42.90
\$B:	139.60

29
ANGUSGS
Powered by Nogen Genetics

Musgrave Foundation 874-870
Bear Mtn Mayflower 6639
Bear Mtn Mayflower 0071

BW	CED	BEPD	WEPD	YEPD	MILK	MARB	REA
82	+7	+0.8	+60	+113	+33	+0.70	+0.39

- Calving Ease
- Maternal Granddams Production: Weaning 5@108 Yearling 4@113 IMF 5@107 REA 5@100
- His maternal grand dam is a Pathfinder.

K C F BENNETT FORTRESS

Birth Date: 9/25/11 Tattoo: Y331 Reg. 17259012

KMK Alliance 6595 I87
Connealy Consensus
Blinda of Conanga 004

S S Objective T510 OT26
Thomas Patricia 9705
Thomas Patricia 71138

\$ Values	
\$W:	+79.39
\$F:	+115.15
\$G:	+44.74
\$B:	+153.52

CED	BW	WW	YW	Milk	SC	CW	Marb	RE	Fat
+10	+0.2	+77	+138	+29	+0.81	+42	+0.62	+0.73	-0.044



Reference Sire

Yearling Bulls



Top 3% WW

Top 4% YW



Bear Mtn Bank Note 8528

Tattoo: 8528 Calved: 01/17/18 Reg No: 19311632

Connealy Earnan 076E

Brooking Bank Note 4040

E A Rose 918

Pine Ridge Hammer S322

Bear Mtn Barbara 1046

Bear Mtn Barbara 8106

30



\$Values	
\$W:	62.92
\$F:	89.42
\$G:	33.17
\$B:	138.02

BW	CED	BEPD	WEPD	YEPD	MILK	MARB	REA
89	+0	+4.4	+74	+127	+23	+0.49	+0.45

- Adj WW 767 • His dam is a Pathfinder.
- Dams Production Record: Weaning 5@109 Yearling 4@108 IMF 4@101 REA 4@105
- He is a maternal brother to Bear Mtn Pure 5023 who sold for \$10,000 to Keyes Angus.



Bear Mtn Barbara 1046
Dam of Lot 30 & 33



Bear Mtn Bank Note 8544

Tattoo: 8544 Calved: 01/20/18 Reg No: 19307683

Connealy Earnan 076E

Brooking Bank Note 4040

E A Rose 918

S A V Net Worth 4200

Bear Mtn Enchantress 2325

Stevenson Enchantress 449J

31



\$Values	
\$W:	43.22
\$F:	57.18
\$G:	31.16
\$B:	118.19

BW	CED	BEPD	WEPD	YEPD	MILK	MARB	REA
97	-7	+5.6	+59	+98	+20	+0.50	+0.33

- Weaning ratio 102 • Adj WW 713
- Dams Production Record: Yearling 3@100 IMF 3@116 REA 3@100



Bear Mtn Bank Note 8561

Tattoo: 8561 Calved: 01/24/18 Reg No: 19307694

Connealy Earnan 076E

Brooking Bank Note 4040

E A Rose 918

S A V Pioneer 7301

Bear Mtn Barbara 4281

Bear Mtn Barbara 9021

32

\$Values	
\$W:	48.23
\$F:	54.08
\$G:	34.18
\$B:	113.34

BW	CED	BEPD	WEPD	YEPD	MILK	MARB	REA
74	+7	+1.1	+55	+94	+19	I+0.45	I+0.55

- For use on larger framed heifers and cows.
- Birth ratio 91
- Dams Production Record: Birth 3@98 REA 2@106

Reference Sire



BROOKING BANK NOTE 4040

Birth Date: 1/28/14

Tattoo: 40B

Reg. 18069951

Connealy Consensus

Connealy Ernan 076E

Brazila of Conanga 3991 839A

S A V Final Answer 0035

E A Rose 918

E A Rose 738

\$ Values

\$W:	+57.84
\$F:	+88.89
\$G:	+31.24
\$B:	+131.86

CED	BW	WW	YW	Milk	SC	CW	Marb	RE	Fat
+5	+2.7	+70	+117	+15	+0.77	+37	+0.44	+0.47	+0.025



- Top 1% WW & \$F
- Top 2% YW & HP
- Top 3% RADG & CW
- Top 4% RE & \$B
- Top 10% \$W



Bear Mtn Confirmed 8570

Tattoo: 8570 Calved: 01/25/18 Reg No: 19309262

K C F Bennett Absolute
RB Confirmed 02-4524
 R B Lady Standard 305-02
 Pine Ridge Hammer S322
Bear Mtn Barbara 1046
 Bear Mtn Barbara 8106

\$Values	
\$W:	65.70
\$F:	115.09
\$G:	27.68
\$B:	171.69

33
ANGUS
Owned by Regan Genetics

BW	CED	BEPD	WEPD	YEPD	MILK	MARB	REA
87	+2	+4.4	+81	+138	+22	+0.23	+0.99



Bear Mtn Barbara 8106
 Grand Dam of Lots 30 & 33



Bear Mtn Pure 5023
 Maternal Brother to Lots 30 & 33

- Weaning ratio 105 • Adj WW 733
- Dams Production Record: Weaning 5@109 Yearling 4@108 IMF 4@101 REA 4@105
- His dam is a Pathfinder.
- He is a maternal brother to Bear Mtn Pure 5023 who sold for \$10,000 to Keyes Angus.

RB CONFIRMED 02-4524

Birth Date: 12/05/14 Tattoo: 4524 Reg. 18222470

S A V Final Answer 0035
K C F Bennett Absolute
 Thomas Miss Lucy 5152

LCC New Standard
R B Lady Standard 305-02
 B A Lady 6807 305

\$ Values	
\$W:	+70.34
\$F:	+118.38
\$G:	+34.99
\$B:	+188.01

CED	BW	WW	YW	Milk	SC	CW	Marb	RE	Fat
+1	+2.9	+77	+133	+24	+0.93	+64	+0.41	+0.98	-0.029



Reference Sire

Yearling Bulls



Top 1% WW, YW,
RADG & \$F

Top 2% \$W & \$B

Top 5% SC & CW

Lot 34



Bear Mtn Confirmed 8605

Tattoo: 8605 Calved: 01/29/18 Reg No: 19309253

K C F Bennett Absolute

RB Confirmed 02-4524

R B Lady Standard 305-02

Connealy In Focus 4925

Bear Mtn Blackbird 6504

Bear Mtn Blackbird 9024

34



\$Values

\$W:	77.06
\$F:	133.66
\$G:	25.21
\$B:	179.46

BW	CED	BEPD	WEPD	YEPD	MILK	MARB	REA
69	+3	+1.6	+84	+142	+18	+0.35	+0.56



Bear Mtn Confirmed 8578

Tattoo: 8578 Calved: 01/26/18 Reg No: 19309250

K C F Bennett Absolute

RB Confirmed 02-4524

R B Lady Standard 305-02

Connealy In Focus 4925

Bear Mtn Lass 6657

Bear Mtn Lass 3166

35

\$Values

\$W:	52.09
\$F:	80.86
\$G:	33.90
\$B:	147.60

BW	CED	BEPD	WEPD	YEPD	MILK	MARB	REA
82	-4	+3.6	+69	+116	+23	I+0.40	I+0.81

- Calving Ease Bull
- Birth ratio 94 Weaning ratio 113
- Adj WW 790
- Maternal Granddams Production: Birth 4@96 Weaning 4@103 Yearling 4@106 IMF 17@105 REA 17@104
- His dam is a full sister to Bear Mtn Titan 4045.

- Weaning ratio 106
- Adj WW 728



Bear Mtn Titan 4045
Full brother to the Dam of Lot 34



Bear Mtn Blackbird 9024
Maternal Grand Dam of Lot 34



Lot 36



Bear Mtn Titanic 8554

Tattoo: 8554 Calved: 01/23/18 Reg No: 19307688

Bear Mtn Titan 4045
Bear Mtn Titanic 6548
 Bear Mtn Eulima 0130
 Vin-Mar O'Reilly Factor
Bear Mtn Eulima 2013
 Bear Mtn Eulima 5210

\$Values	
\$W:	65.58
\$F:	58.27
\$G:	31.11
\$B:	119.97

36



BW	CED	BEPD	WEPD	YEPD	MILK	MARB	REA
87	+8	+1.2	+55	+100	+38	+0.36	+0.58

- Weaning ratio 111
- Adj WW 772
- Dams Production Record: Weaning 4@106 Yearling 2@104 IMF 3@109



Bear Mtn Titanic 8540

Tattoo: 8540 Calved: 01/19/18 Reg No: 19307680

Bear Mtn Titan 4045
Bear Mtn Titanic 6548
 Bear Mtn Eulima 0130
 EXAR 263C
Bear Mtn Jamie 2320
 Bear Mtn Jamie 4101

\$Values	
\$W:	57.37
\$F:	57.65
\$G:	27.65
\$B:	118.56

37

BW	CED	BEPD	WEPD	YEPD	MILK	MARB	REA
82	+5	+1.9	+59	+101	+29	I+0.33	I+0.54

- Birth ratio 100 Weaning ratio 102
- Adj WW 712
- Dams Production Record: Birth 5@99 Weaning 5@104 Yearling 2@105
- His dam is a Pathfinder.

BEAR MTN TITANIC 6548

Birth Date: 1/20/16 Tattoo: 6548 Reg. 18583311

Connealy In Focus 4925
Bear Mtn Titan 4045
 Bear Mtn Blackbird 9024
 GDAR Game Day 449
Bear Mtn Eulima 0130
 Bear Mtn Eulima 6278

\$ Values	
\$W:	+71.81
\$F:	+66.46
\$G:	+18.53
\$B:	+116.76

CED	BW	WW	YW	Milk	SC	CW	Marb	RE	Fat
+6	+1.9	+68	+114	+30	+1.77	+46	+0.21	+0.54	+0.035



Reference Sire

Yearling Bulls



**Top 1% WW, YW, Milk,
CW, \$W, \$E, \$B**

Top 10% RADG & RE



Bear Mtn RRS Titanic 8613

Tattoo: 8613 Calved: 01/31/18 Reg No: 19307750

Bear Mtn Titan 4045
Bear Mtn Titanic 6548
 Bear Mtn Eulima 0130
 MAR Innovation 251
 Reagans BM Forever Lady 6671
 Reagans Forever Lady 2034

\$Values	
\$W:	92.34
\$F:	117.11
\$G:	36.51
\$B:	187.26

38



BW	CED	BEPD	WEPD	YEPD	MILK	MARB	REA
81	+4	+1.7	+82	+140	+39	+0.56	+0.88



Bear Mtn Titanic 8595

Tattoo: 8595 Calved: 01/28/18 Reg No: 19307742

Bear Mtn Titan 4045
Bear Mtn Titanic 6548
 Bear Mtn Eulima 0130
 MAR Innovation 251
Bear Mtn Barbara 6526
 Bear Mtn Barbara 1046

\$Values	
\$W:	67.70
\$F:	74.41
\$G:	-1.06
\$B:	108.51

39



BW	CED	BEPD	WEPD	YEPD	MILK	MARB	REA
84	-5	+4.3	+75	+120	+26	-0.19	+0.87

- Weaning ratio 119 • Adj WW 833
- Maternal Granddams Production: Weaning 4@102 IMF 3@125
- This bull has been one of our favorites all year long and just out of a first calf heifer. He's long, deep, thick, smooth made & really sound on his feet and legs.

- Weaning ratio 111 • Adj WW 777
- Maternal Granddams Production: Weaning 5@109 Yearling 4@108 IMF 4@101 REA 4@105
- His maternal grand dam is a Pathfinder.
- He dam is a maternal sister to Bear Mtn Pure 5023 who sold for \$10,000 to Keyes Angus.



Bear Mtn Barbara 1046
 Maternal Grand Dam of Lot 39

Lot 39



Dam of Lot 40 was a member of the Reserve Champion Pen of 3 Heifers at the 2016 NWSS



Bear Mtn Titanic 8549

Tattoo: 8549 Calved: 01/21/18 Reg No: 19307685

Bear Mtn Titan 4045
Bear Mtn Titanic 6548
 Bear Mtn Eulima 0130
 PVF Insight 0129
Bear Mtn Jamie 5012
 Bear Mtn Jamie 4101

\$Values	
SW:	65.38
SF:	69.70
SG:	17.52
SB:	116.16

BW	CED	BEPD	WEPD	YEPD	MILK	MARB	REA
80	+3	+2.8	+67	+112	+26	+0.18	+0.53

- Weaning ratio 105
- Adj WW 105
- Dams Production Record: Birth 2@99 Weaning 2@105 Yearling 1@104 REA 1@105



Bear Mtn Titanic 8543

Tattoo: 8543 Calved: 01/20/18 Reg No: 19307682

Bear Mtn Titan 4045
Bear Mtn Titanic 6548
 Bear Mtn Eulima 0130
 Bear Mtn Freight Train 350L
Bear Mtn Barbara 9110
 Bear Mtn Barbara 7232

\$Values	
SW:	53.81
SF:	52.65
SG:	5.17
SB:	104.92

BW	CED	BEPD	WEPD	YEPD	MILK	MARB	REA
82	+9	+0.4	+53	+92	+27	-0.03	+0.48

- Calving Ease Bull
- Birth ratio 100 Weaning ratio 107
- Adj WW 749
- Dams Production Record: IMF 6@104 REA 6@104



Bear Mtn RRS Titanic 8600

Tattoo: 8600 Calved: 01/28/18 Reg No: 19307744

Bear Mtn Titan 4045
Bear Mtn Titanic 6548
 Bear Mtn Eulima 0130
 WK George
Reagan's Forever Lady 4057
 Reagan's Spunky Lady 1111

\$Values	
SW:	68.32
SF:	74.98
SG:	33.59
SB:	158.14

BW	CED	BEPD	WEPD	YEPD	MILK	MARB	REA
83	+2	+2.5	+69	+115	+24	+0.44	+0.80

- Weaning ratio 100
- Adj WW 700
- Dams Production Record: Weaning 2@100 Yearling 1@104



Bear Mtn Titanic 8553

Tattoo: 8553 Calved: 01/23/18 Reg No: 19307687

Bear Mtn Titan 4045
Bear Mtn Titanic 6548
 Bear Mtn Eulima 0130
 Riverbend Beyond
Bear Mtn Blackbird 0225
 Bear Mtn Blackbird 6283

\$Values	
SW:	56.53
SF:	51.02
SG:	29.72
SB:	133.99

BW	CED	BEPD	WEPD	YEPD	MILK	MARB	REA
81	+7	+1.0	+53	+94	+32	1+0.45	1+0.41

- Calving Ease Bull
- Birth ratio 99
- Dams Production Record: Weaning 6@106 Yearling 3@103

Yearling Bulls



Bear Mtn Judy 3092
Dam of Lot 44



Bear Mtn Perfect Vision 8525

Tattoo: 8525 Calved: 01/16/18 Reg No: 19307733

Connealy In Focus 4925
Bear Mtn Perfect Vision 6509
 Bear Mtn Blackbird 9024
 S A V Pioneer 7301
Bear Mtn Judy 3092
 Bear Mtn Judy 0133

SValues	
SW:	55.62
SF:	43.68
SG:	29.36
SB:	109.23

44



BW	CED	BEPD	WEPD	YEPD	MILK	MARB	REA
86	+8	+1.3	+57	+93	+20	+0.32	+0.90



Bear Mtn Perfect Vision 8521

Tattoo: 8521 Calved: 01/14/18 Reg No: 19307732

Connealy In Focus 4925
Bear Mtn Perfect Vision 6509
 Bear Mtn Blackbird 9024
 Connealy Consensus 7229
Bear Mtn Dolly 3220
 Bear Mtn Dolly 8119

SValues	
SW:	63.07
SF:	60.65
SG:	37.30
SB:	149.64

46

BW	CED	BEPD	WEPD	YEPD	MILK	MARB	REA
77	+9	+0.1	+62	+103	+26	1+0.62	1+0.55

- For use on larger framed heifers and cows
- Weaning ratio 104 • Adj WW 727
- Dams Production Record: Weaning 4@102 Yearling 2@109
- His maternal brother, Bear Mtn Justify, sold to Keyes Angus for \$10,500 in last years sale.

- Calving Ease Bull • Birth ratio 85 Weaning ratio 104
- Adj WW 726
- Dams Production Record: Weaning 3@102 Yearling 1@109 IMF 2@113 REA 2@103



Bear Mtn Perfect Vision 8579

Tattoo: 8579 Calved: 01/26/18 Reg No: 19307700

Connealy In Focus 4925
Bear Mtn Perfect Vision 6509
 Bear Mtn Blackbird 9024
 Bear Mtn Factor 1049
Bear Mtn Miss Lucy 4255
 Bell Key Miss Lucy 135

SValues	
SW:	56.22
SF:	44.43
SG:	34.89
SB:	119.37

45

BW	CED	BEPD	WEPD	YEPD	MILK	MARB	REA
71	+11	-1.2	+49	+83	+29	1+0.44	1+0.63

- Calving Ease Bull • Birth ratio 90 Weaning ratio 105
- Adj WW 724
- Dams Production Record: Birth 2@97 Weaning 2@108 REA 1@103



Bear Mtn Perfect Vision 6509
Sire of Lots 44 - 46



Lot 47



Bear Mtn Perfect Vision 8534

Tattoo: 8534 Calved: 01/18/18 Reg No: 19307678

Connealy In Focus 4925

Bear Mtn Perfect Vision 6509

Bear Mtn Blackbird 9024

S A V Net Worth 4200

Bear Mtn Enchantress 2322

Stevenson Enchantress 449J

\$Values	
SW:	53.38
SF:	54.68
SG:	32.44
SB:	120.09

47



BW	CED	BEPD	WEPD	YEPD	MILK	MARB	REA
83	+9	+1.2	+49	+92	+31	+0.44	+0.55

- Calving Ease Bull
- Weaning ratio 104
- Adj WW 725
- Dams Production Record: Weaning 5@100 Yearling 2@106 REA 4@103



Bear Mtn RRS Visionary 8663

Tattoo: 8663 Calved: 02/11/18 Reg No: 19307769

Connealy In Focus 4925

Bear Mtn Visionary 6517

Bear Mtn Blackbird 9024

Barstow Cash

Reagan's Forever Lady 4037

Reagans Forever Lady 5191

\$Values	
SW:	63.76
SF:	87.85
SG:	34.83
SB:	156.06

48

BW	CED	BEPD	WEPD	YEPD	MILK	MARB	REA
89	+4	+2.8	+70	+119	+28	I +0.47	I +0.80

- Weaning ratio 112
- Adj WW 773
- Dams Production Record: Weaning 3@110 Yearling 2@109 IMF 2@104 REA 2@103



Bear Mtn Enchantress 2322
Sire of Lot 47



Bear Mtn Visionary 8516

Tattoo: 8516 Calved: 01/14/18 Reg No: 19307730

Connealy In Focus 4925

Bear Mtn Visionary 6517

Bear Mtn Blackbird 9024

S A V Pioneer 7301

Bear Mtn Miss Manor 3152

Stevenson Miss Manor 83S4

\$Values	
SW:	48.66
SF:	38.08
SG:	45.17
SB:	119.13

49

BW	CED	BEPD	WEPD	YEPD	MILK	MARB	REA
72	+9	+0.6	+48	+81	+23	+0.76	+0.55

- Calving Ease Bull
- Birth ratio 88
- Dams Production Record: Yearling 2@102 IMF 3@115 REA 3@107

Yearling Bulls

Reference Sire



BEAR MTN TITAN 4045

Birth Date: 1/17/14 Tattoo: 4045 Reg. 17927346

Mytty In Focus
Connealy In Focus 4925
 Black Cana of Conanga 206

Twin Valley Precision E161
Bear Mtn Blackbird 9024
 EXAR Blackbird 1837

\$ Values	
\$W:	+71.64
\$F:	+58.94
\$G:	+39.47
\$B:	+139.37

CED	BW	WW	YW	Milk	SC	CW	Marb	RE	Fat
+12	+0.5	+68	+102	+22	+1.66	+41	+0.70	+0.73	+0.062



Bear Mtn Titan 8567

Tattoo: 8567 Calved: 01/25/18 Reg No: 19307698

Connealy In Focus 4925
Bear Mtn Titan 4045
 Bear Mtn Blackbird 9024
 Bear Mtn Factor 1049
Bear Mtn Elba 4150
 Bear Mtn Elba 0029

\$Values	
\$W:	60.08
\$F:	69.11
\$G:	36.05
\$B:	137.43

50

BW	CED	BEPD	WEPD	YEPD	MILK	MARB	REA
76	+7	+1.5	+65	+104	+21	I+0.56	I+0.58

- For use on larger framed heifers and cows.
- Birth ratio 94 Weaning ratio 101
- Dams Production Record: Birth 3@100 IMF 2@100



Bear Mtn Blurred Vision 8703

Tattoo: 8703 Calved: 02/20/18 Reg No: 19307714

Connealy In Focus 4925
Bear Mtn Blurred Vision 6503
 Bear Mtn Blackbird 9024
 EF Complement 8088
Bear Mtn Forever Lady 5217
 Bear Mtn Forever Lady 2197

\$Values	
\$W:	79.81
\$F:	81.04
\$G:	8.65
\$B:	126.64

52



BW	CED	BEPD	WEPD	YEPD	MILK	MARB	REA
88	+9	+1.5	+71	+115	+30	+0.05	+0.57

- Weaning ratio 107 • Adj WW 736
- Maternal Granddams Production: Weaning 4@110 Yearling 4@109 IMF 4@105 REA 4@108
- His maternal grand dam is a Pathfinder.
- His dam is a maternal sister to "Maternal Dream", Lot ???.



Bear Mtn Titan 8555

Tattoo: 8555 Calved: 01/23/18 Reg No: 19307689

Connealy In Focus 4925
Bear Mtn Titan 4045
 Bear Mtn Blackbird 9024
 Bear Mtn Factor 1049
Bear Mtn Miss Manor 5099
 Stevenson Miss Manor 83S4

\$Values	
\$W:	54.68
\$F:	45.72
\$G:	35.92
\$B:	112.06

51

BW	CED	BEPD	WEPD	YEPD	MILK	MARB	REA
73	+10	+0.5	+58	+93	+23	I+0.54	I+0.61

- Calving Ease Bull
- Birth ratio 93 Weaning ratio 99
- His dam has 2@94 for birth.



Bear Mtn Blurred Vision 8704

Tattoo: 8704 Calved: 02/20/18 Reg No: 19307715

Connealy In Focus 4925
Bear Mtn Blurred Vision 6503
 Bear Mtn Blackbird 9024
 Leachman Saugahatchee 3000C
LHC Blackbird 834
 Riverbend Blackbird 2181

\$Values	
\$W:	66.08
\$F:	63.03
\$G:	15.72
\$B:	107.87

53



BW	CED	BEPD	WEPD	YEPD	MILK	MARB	REA
86	+8	+1.8	+62	+101	+28	+0.11	+0.46

- Weaning ratio 105 • Adj WW 730
- Dams Production Record: Birth 8@100 Weaning 8@108 Yearling 5@105 IMF 6@99 REA 6@106
- His dam is a Pathfinder.



Bear Mtn Forever Lady 2197
 Grand Dam of Lot 52

Yearling and Ultrasound info with updated EPD's will be available sale day. Look on our website for updates.



Top 1% Milk
Top 2% YW, CW, \$W & \$F
Top 3% RE & \$B



JMB Emulota 013
 Dam of Lots 54 - 56



Bear Mtn GR Top Game 8677

Tattoo: 8677 Calved: 02/13/18 Reg No: 19313856

BW	CED	BEPD	WEPD	YEPD	MILK	MARB	REA
92	+1	+3.4	+75	+135	+42	+0.42	+1.02

54
ANGUS
Powered by Neogen GenScan

\$Values			
\$W: 77.60	\$F: 109.24	\$G: 34.95	\$B: 178.10

- Owned with Gordon Resources. • Adj WW 695
- This is a full brother to the Select Sires bull JMB Traction who is known for his excellent growth and muscle.
- Dams Production Record: Birth 3@98 Weaning 3@112 Yearling 3@108 IMF 36@101 Yearling 36@103



Bear Mtn GR Top Game 8651

Tattoo: 8651 Calved: 02/09/18 Reg No: 19313849

56
ANGUS
Powered by Neogen GenScan

GDAR Game Day 449
 Sitz Top Game 561X
 Sitz Pride 88T
 S A V 004 Predominant 4438
 JMB Emulota 013
 BAR S Emulota 5426

\$Values	
\$W:	79.30
\$F:	88.13
\$G:	43.86
\$B:	160.97

BW	CED	BEPD	WEPD	YEPD	MILK	MARB	REA
82	+7	+0.5	+68	+119	+32	+0.61	+0.93

- Owned with Gordon Resources. • Calving Ease Bull
- This is a full brother to the Select Sires bull JMB Traction who is known for his excellent growth and muscle.
- Dams Production Record: Birth 3@98 Weaning 3@112 Yearling 3@108 IMF 36@101 Yearling 36@103



Bear Mtn GR Top Game 8667

Tattoo: 8667 Calved: 02/13/18 Reg No: 19313852

BW	CED	BEPD	WEPD	YEPD	MILK	MARB	REA
96	+8	+3.3	+65	+116	+36	+0.29	+0.70

55
ANGUS
Powered by Neogen GenScan

\$Values			
\$W: 68.76	\$F: 83.35	\$G: 26.27	\$B: 138.21

- Owned with Gordon Resources. • Weaning ratio 105
- Adj WW 703
- This is a full brother to the Select Sires bull JMB Traction who is known for his excellent growth and muscle.
- Dams Production Record: Birth 3@98 Weaning 3@112 Yearling 3@108 IMF 36@101 Yearling 36@103



JMB Traction
 Full brother to Lots 54 - 56

Yearling Bulls



Lot 57



Bear Mtn Assurance Plus 8725

Tattoo: 8725 Calved: 03/02/18 Reg No: 19311738

Connealy Confidence 0100

Bartels Assurance Plus

Cappa Plus2013 0016 Bartels

SDCC Complete 367U

Bear Mtn Lassie 2166

Bear Mtn Lassie 9050

\$Values	
SW:	59.30
SF:	69.77
SG:	40.11
SB:	133.40

57
ANGUSGS
Powered by Nogen Genesys

BW	CED	BEPD	WEPD	YEPD	MILK	MARB	REA
86	+2	+2.1	+55	+102	+31	+0.67	+0.70

- Weaning ratio 101
- Adj WW 702
- Dams Production Record: Yearling 2@101 IMF 4@101



Bear Mtn Assurance Plus 8641

Tattoo: 8641 Calved: 02/07/18 Reg No: 19307760

Connealy Confidence 0100

Bartels Assurance Plus

Cappa Plus2013 0016 Bartels

Schurrtop Ranger 3442

Bear Mtn Blackette Lady 1162

Bear Mtn Blackette Lady 8007

\$Values	
SW:	61.71
SF:	71.23
SG:	21.81
SB:	117.96

59
ANGUSGS
Powered by Nogen Genesys

BW	CED	BEPD	WEPD	YEPD	MILK	MARB	REA
78	+12	-1.0	+59	+104	+26	+0.20	+0.64

- Calving Ease Bull
- Birth ratio 95 Weaning ratio 105
- Adj WW 722
- Dams Production Record: Weaning 6@104 Yearling 3@102



Bear Mtn Assurance Plus 8623

Tattoo: 8623 Calved: 02/02/18 Reg No: 19311739

Connealy Confidence 0100

Bartels Assurance Plus

Cappa Plus2013 0016 Bartels

Connealy Consensus 7229

Bear Mtn Elba 3072

Bear Mtn Elba 0029

\$Values	
SW:	59.42
SF:	68.44
SG:	34.49
SB:	127.94

58
ANGUSGS
Powered by Nogen Genesys

BW	CED	BEPD	WEPD	YEPD	MILK	MARB	REA
79	+9	+0	+61	+106	+23	I+0.43	I+0.73

- Calving Ease Bull
- Birth ratio 96 Weaning ratio 101
- Adj WW 708
- Dams Production Record: Birth 4@98 Weaning 4@100 IMF 2@101 REA 2@109



Bear Mtn Assurance Plus 8726

Tattoo: 8726 Calved: 03/02/18 Reg No: 19307724

Connealy Confidence 0100

Bartels Assurance Plus

Cappa Plus2013 0016 Bartels

Bear Mtn Renegade 9045

Bear Mtn Blackbird 3095

Bear Mtn Blackbird 5236

\$Values	
SW:	49.48
SF:	42.70
SG:	37.91
SB:	113.08

60
ANGUSGS
Powered by Nogen Genesys

BW	CED	BEPD	WEPD	YEPD	MILK	MARB	REA
88	+6	+1.5	+55	+89	+21	+0.51	+0.76

- His dam has 1@105 for IMF

Yearling Bulls



Bear Mtn Jamie 3141
Dam of Lot 61



Bear Mtn KP Assurance 8657

Tattoo: 8657 Calved: 02/10/18 Reg No: 19307766

Connealy Confidence 0100

Bartels Assurance Plus

Cappa Plus2013 0016 Bartels

VAR Rocky 80029

Bear Mtn Erica 2014

Bear Mtn Erica 9077

\$Values

\$W:	74.83
\$F:	80.40
\$G:	25.02
\$B:	130.39

63

ANGUSGS
Powered by Neogen GenScan

BW	CED	BEPD	WEPD	YEPD	MILK	MARB	REA
90	+13	-1.1	+62	+115	+37	+0.26	+0.71

- Calving Ease Bull
- Dams Production Record: Weaning 3@112 Yearling 2@110 IMF 2@141 REA 2@101
- A maternal brother was the 2nd high seller in 2017 to Hanson Farms.



Bear Mtn Assurance Plus 8609

Tattoo: 8609 Calved: 01/30/18 Reg No: 19307748

Connealy Confidence 0100

Bartels Assurance Plus

Cappa Plus2013 0016 Bartels

S A V Brilliance 8077

Bear Mtn Jamie 3141

LaGrand Jamie H455

\$Values

\$W:	70.32
\$F:	114.55
\$G:	29.09
\$B:	172.51

61

ANGUSGS
Powered by Neogen GenScan

BW	CED	BEPD	WEPD	YEPD	MILK	MARB	REA
60	+4	+1.4	+68	+133	+31	+0.41	+0.87

- Twin
- For use on larger framed heifers and cows.
- Birth ratio 83 Weaning ratio 99
- Adj WW 693



Bear Mtn Assurance Plus 8646

Tattoo: 8646 Calved: 02/08/18 Reg No: 19307762

Connealy Confidence 0100

Bartels Assurance Plus

Cappa Plus2013 0016 Bartels

VAR Rocky 80029

Bear Mtn Miss Manor 3002

Stevenson Miss Manor 83S4

\$Values

\$W:	58.22
\$F:	71.44
\$G:	26.03
\$B:	142.59

64

ANGUSGS
Powered by Neogen GenScan

BW	CED	BEPD	WEPD	YEPD	MILK	MARB	REA
87	+4	+1.4	+59	+104	+24	+0.27	+0.87

- Weaning ratio 101
- Adj WW 708
- Dams Production Record: Birth 4@100 Weaning 4@100 IMF 3@105 REA 3@108



Bear Mtn Assurance Plus 8714

Tattoo: 8714 Calved: 02/24/18 Reg No: 19311653

Connealy Confidence 0100

Bartels Assurance Plus

Cappa Plus2013 0016 Bartels

N Bar Emulation EXT

Bear Mtn Forever Lady 2039

Boyd Forever Lady 502

\$Values

\$W:	56.81
\$F:	65.13
\$G:	17.04
\$B:	113.72

62

ANGUSGS
Powered by Neogen GenScan

BW	CED	BEPD	WEPD	YEPD	MILK	MARB	REA
81	+9	+1.2	+56	+101	+22	+0.20	+0.42

- Calving Ease Bull
- Birth ratio 99 Weaning ratio 107
- Adj WW 744
- Dams Production Record: Birth 4@96 Weaning 5@106 Yearling 3@100 IMF 3@116 REA 3@107



Bojo 8337

Tattoo: 8337-DV Calved: 02/02/18 Reg No: 19343230

Connealy Confidence 0100

191 Bo Jo 401

Mac Jojo 1102

SMR P175 Rainmaker 1036

Cedar Mesa Shania 363

CW 818 Shania 063

\$Values

\$W:	54.96
\$F:	55.64
\$G:	43.36
\$B:	133.67

65

ANGUSGS
Powered by Neogen GenScan

BW	CED	BEPD	WEPD	YEPD	MILK	MARB	REA
82	+13	-1.7	+57	+98	+20	I+0.71	I+0.65

- Calving Ease Bull
- Birth ratio 91 Weaning ratio 101
- Adj WW 706
- Dams Production Record: Birth 4@98 Weaning 4@104 Yearling 2@105 IMF 2@100

BARTELS ASSURANCE PLUS

Birth Date: 1/21/14 Tattoo: 407 Reg. 18023204

Connealy Tobin
Connealy Confidence 0100

Becka Gala of Conanga 8281

Connealy Final Solution

Cappa Plus2013 0016 Bartels

Black Cappa 6040 0016 Bartel

\$ Values

\$W:	+64.31
\$F:	+97.01
\$G:	+18.94
\$B:	+142.87

CED	BW	WW	YW	Milk	SC	CW	Marb	RE	Fat
+10	-0.2	+64	+122	+25	+0.95	+52	+0.15	+0.94	+0.026



Reference Sure

Yearling Bulls



Top 1% CED, BW & Milk

Top 3% \$W

Top 10% \$F & \$B

Top 25% YW



Bear Mtn Testified 8601

Tattoo: 8601 Calved: 01/28/18 Reg No: 19307745

KG Justified 3023

Bear Mtn Testified 6521

Bear Mtn Forever Lady 1220

Bear Mtn Titan 4045

Bear Mtn Forever Lady 6773

Bear Mtn Forever Lady 0001

66

ANGUS
Powered by Nogen GeneSeek

\$Values	
\$W:	75.33
\$F:	88.16
\$G:	35.31
\$B:	167.89

BW	CED	BEPD	WEPD	YEPD	MILK	MARB	REA
61	+17	-3.0	+57	+107	+40	+0.65	+0.45



Bear Mtn Forever Lady 0001
Maternal Grand Dam of Lot 66

- Calving Ease Bull
- Birth ratio 84 Weaning ratio 109
- Adj WW 761
- Maternal Granddams Production: Weaning 4@112 Yearling 4@108 IMF 16@107 REA 16@102

BEAR MTN TESTIFIED 6521

Birth Date: 1/15/16

Tattoo: 6521

Reg. 18583291

Connealy Judgment
KG Justified 3023
KG Miss Magic 1443

Bear Mtn Owyhee 5012
Bear Mtn Forever Lady 1220
Boyd Forever Lady 502

\$ Values	
\$W:	+76.04
\$F:	+57.37
\$G:	+41.41
\$B:	+134.91

CED	BW	WW	YW	Milk	SC	CW	Marb	RE	Fat
+17	-2.9	+57	+97	+29	+0.84	+38	+0.77	+0.47	+0.040

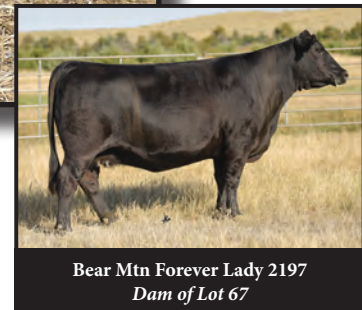
Reference Sire





Top 4% \$W
Top 5% WW
Top 10% Milk & CW
Top 15% YW & \$B

Lot 67



Bear Mtn Forever Lady 2197
 Dam of Lot 67



Bear Mtn Maternal Dream

Tattoo: 7843 Calved: 09/18/17 Reg No: 19187348

Basin Payweight 006S

Basin Payweight 1682

21AR O Lass 7017

H A Image Maker 0415

Bear Mtn Forever Lady 2197

Boyd Forever Lady 502

\$Values	
\$W:	72.73
\$F:	67.98
\$G:	32.56
\$B:	154.09

67



BW	CED	BEPD	WEPD	YEPD	MILK	MARB	REA
84	+7	+1.3	+71	+115	+31	+0.50	+0.58

- Weaning ratio 114 Yearling ratio 113 REA ratio 109
- Adj WW 718 Adj YW 1307
- Dams Production Record: Weaning 4@110 Yearling 4@109 IMF 4@105 REA 4@108
- Maternal Dream has impressed us from a young age and has jumped through every hoop with flying colors. It all starts with being out of one of the best cows we have ever raised who is a Pathfinder and earned her way into our donor pen. She was the 2nd high seller in our Mature cow herd dispersal this past fall selling to RCA (Roger Clausen from Nebraska City).
- His name says it all, he is bred to make as good a set of daughters as any could be, but he does it without sacrificing muscle, eye appeal, length & is really good footed.



Bear Mtn Payweight 7821

Tattoo: 7821 Calved: 09/14/17 Reg No: 19187309

Basin Payweight 006S

Basin Payweight 1682

21AR O Lass 7017

Bear Mtn O'Reilly Factor2049

Bear Mtn Bell 5206

Bear Mtn Bell 3215

\$Values	
\$W:	68.24
\$F:	58.47
\$G:	38.80
\$B:	138.07

68



BW	CED	BEPD	WEPD	YEPD	MILK	MARB	REA
74	+7	+1.0	+59	+101	+32	+0.68	+0.35

- For use on larger framed heifers and cows.
- Weaning ratio 106 Yearling ratio 102 REA ratio 108

BASIN PAYWEIGHT 1682

Birth Date: 2/11/11 Tattoo: 1682 Reg. 17038724

Vermilion Payweight J847

Basin Payweight 006S

Basin Lucy 3829

HARB Pendleton 765 J H

21AR O Lass 7017

21AR O Lass F24A

\$ Values

\$W:	+88.26
\$F:	+80.79
\$G:	+32.81
\$B:	+148.98

CED	BW	WW	YW	Milk	SC	CW	Marb	RE	Fat
+6	+0.7	+68	+119	+31	+1.02	+53	+0.75	+0.25	+0.067



Reference Sire

Coming 2 Year Olds



Top 1% YW & SF Top 2% WW, CW & \$B Top 4% \$W Top 15% HP, Marb & RE



Bear Mtn On Course 7841

Tattoo: 7841 Calved: 09/17/17 Reg No: 19187560

S A V Resource 1441
Koupals B&B On Course 5068
 B&B Pure Pride 2029

\$Values	
SW:	73.64
SF:	118.54
SG:	41.50
SB:	182.81

MCATL Pure Product 903-55
Bear Mtn Erica Dianna 4221
 Bear Mtn Erica Dianna 0210

69
ANGUS
Owned by Roger Sandberg

BW	CED	BEPD	WEPD	YEPD	MILK	MARB	REA
80	+5	+2.1	+76	+142	+27	+0.88	+0.77



Bear Mtn On Course 7861

Tattoo: 7861 Calved: 09/24/17 Reg No: 19187564

S A V Resource 1441
Koupals B&B On Course 5068
 B&B Pure Pride 2029

\$Values	
SW:	42.97
SF:	69.18
SG:	28.75
SB:	144.97

70

Bear Mtn Renegade 9045
Bear Mtn Erica Dianna 3258
 Bear Mtn Erica Dianna 0210

BW	CED	BEPD	WEPD	YEPD	MILK	MARB	REA
87	+0	+2.9	+59	+106	+22	+0.38	+0.66

- Weaning ratio 110 Yearling Ratio 108 IMF ratio 154
- Adj WW 691 Adj YW 1245 Adj IMF 4.24
- Dams Production Record: Birth 2@99 Weaning 2@104 Yearling 2@104 IMF 2@145
- This bull does it all and has the look of a herd sire with extra length of body. He has a ton of performance with a moderate birth epd and excellent carcass merit. He truly is a herd sire candidate.
- His dam is a model Angus cow with a picture perfect udder and traces back to the same cow that produced Wulffs Ext 6106.

- Yearling ratio 104
- His dam has 3@105 for IMF and 3@101 for REA.
- He is a ¼ brother to Lot 69.

KOUPALS B&B ON COURSE 5068

Birth Date: 1/12/15 Tattoo: 5068 Reg. 18255146

Rito 707 of Ideal 3407 7075
S A V Resource 1441
 S A V Blackcap May 4136

Koupals B&B Identity
B&B Pure Pride 2029
 B&B Prospector Pride 004

\$ Values	
\$W:	+58.25
\$F:	+98.06
\$G:	+23.89
\$B:	+156.56

CED	BW	WW	YW	Milk	SC	CW	Marb	RE	Fat
+2	+2.0	+65	+129	+24	+0.91	+65	+0.29	+0.84	+0.025

Reference Sire





Bear Mtn On Course 7851

Tattoo: 7851 Calved: 09/19/17 Reg No: 19187561

S A V Resource 1441

Koupals B&B On Course 5068

B&B Pure Pride 2029

Bear Mtn Factor 1049

Bear Mtn Blackbird 4254

Bear Mtn Blackbird 5236

71

\$Values	
SW:	50.08
SF:	87.72
SG:	28.83
SB:	154.77

BW	CED	BEPD	WEPD	YEPD	MILK	MARB	REA
80	+1	+2.7	+65	+118	+25	+0.43	+0.59

- Weaning ratio 109 Yearling ratio 105 REA ratio 104
- His dam has 2@107 for REA



Bear Mtn Cowboy Up 7857

Tattoo: 7857 Calved: 09/21/17 Reg No: 19186110

HA Outside 3008

HA Cowboy Up 5405

HA Blackcap Lady 1602

S A V Bismarck 5682

44 Ruby 511X

B/R Ruby 1224

74



\$Values	
SW:	47.16
SF:	56.04
SG:	27.32
SB:	113.31

BW	CED	BEPD	WEPD	YEPD	MILK	MARB	REA
89	+12	+0.6	+54	+96	+19	+0.25	+0.71

- Calving Ease Bull • REA ratio 114
- Adj WW 748 Adj YW 1273 He was the heaviest weaning fall calf.
- Dams Production Record: Birth 5@93 REA 10@101
- His dam sold ½ interest for \$26,000 to ZWT and is a maternal sister to B/R New Day 454.



Bear Mtn On Course 7829

Tattoo: 7829 Calved: 09/15/17 Reg No: 19187566

S A V Resource 1441

Koupals B&B On Course 5068

B&B Pure Pride 2029

Bear Mtn Renegade 9045

Bear Mtn Lady 1182

Bear Mtn Lady 3043

72

\$Values	
SW:	45.19
SF:	67.21
SG:	36.19
SB:	150.13

BW	CED	BEPD	WEPD	YEPD	MILK	MARB	REA
79	+3	+2.3	+56	+106	+24	+0.53	+0.72

- Yearling ratio 101 IMF ratio 124 REA ratio 107
- Dams Production Record: Birth 5@100 Weaning 5@100 Yearling 5@101 IMF 5@109 REA 5@101



Bear Mtn Cowboy Up 7831

Tattoo: 7831 Calved: 09/16/17 Reg No: 19186103

HA Outside 3008

HA Cowboy Up 5405

HA Blackcap Lady 1602

B C Lookout 7024

Bear Mtn Jamie 3202

LaGrand Jamie H455

75



\$Values	
SW:	46.02
SF:	65.42
SG:	34.52
SB:	114.84

BW	CED	BEPD	WEPD	YEPD	MILK	MARB	REA
81	+6	+2.8	+62	+105	+13	+0.54	+0.23

- IMF ratio 148



Bear Mtn On Course 7840

Tattoo: 7840 Calved: 09/17/17 Reg No: 19187565

S A V Resource 1441

Koupals B&B On Course 5068

B&B Pure Pride 2029

VAR Rocky 80029

Silveiras BMAR Georgia 2203

WAR Georgia 7061

73

\$Values	
SW:	51.24
SF:	54.49
SG:	23.88
SB:	115.10

BW	CED	BEPD	WEPD	YEPD	MILK	MARB	REA
81	+2	+2.2	+57	+103	+26	+0.30	+0.50

- Dams Production Record: Birth 4@97 Weaning 4@102 Yearling 4@100



44 Ruby 511X
Dam of Lot 74

Coming 2 Year Olds



**Top 10%
WW, YW, \$W & \$F**



Bear Mtn Enchantress 2005
Dam of Lots 76 & 77

Lot 76



Bear Mtn Cowboy Up 7823

Tattoo: 7823 Calved: 09/14/17 Reg No: 19186099

HA Outside 3008
HA Cowboy Up 5405
HA Blackcap Lady 1602

SValues	
\$W:	67.37
\$F:	85.40
\$G:	39.91
\$B:	137.89

76



S A V Pioneer 7301
Bear Mtn Enchantress 2005
Stevenson Enchantress 449J

BW	CED	BEPD	WEPD	YEPD	MILK	MARB	REA
75	+9	+1.3	+68	+122	+24	+0.74	+0.19



Bear Mtn Cowboy Up 7812

Tattoo: 7812 Calved: 09/11/17 Reg No: 19186094

HA Outside 3008
HA Cowboy Up 5405
HA Blackcap Lady 1602

SValues	
\$W:	46.54
\$F:	74.82
\$G:	36.50
\$B:	126.38

77



S A V Pioneer 7301
Bear Mtn Enchantress 2005
Stevenson Enchantress 449J

BW	CED	BEPD	WEPD	YEPD	MILK	MARB	REA
76	+7	+1.7	+55	+105	+17	+0.68	+0.10

- Calving Ease Bull
- IMF ratio 150 Adj IMF 4.92
- His donor dam has 19@108 for IMF

- For use on larger framed heifers and cows.
- His donor dam has 19@108 for IMF



Stevenson Enchantress 449J
Maternal Grand Dam of Lots 76 & 77

Lot 77



**Top 1%
RADG & \$F**

**Top 2%
WW & YW**

Top 3% \$W

Top 4% \$F



Bear Mtn Forever Lady 0001
Dam of Lots 78 - 80



Bear Mtn Cowboy Up 7824

Tattoo: 7824 Calved: 09/15/17 Reg No: 19186100

BW	CED	BEPD	WEPD	YEPD	MILK	MARB	REA
87	+7	+1.7	+79	+137	+23	+0.57	+0.38

\$Values			
\$W: 76.07	\$F: 125.67	\$G: 34.13	\$B: 174.06

78
ANGUS
Powered by Neogen GenScan

- For use on larger framed heifers and cows.
- Dams Production Record: Weaning 4@112 Yearling 4@108 IMF 16@107 REA 16@102



Bear Mtn Cowboy Up 7811

Tattoo: 7811 Calved: 09/11/17 Reg No: 19186093

BW	CED	BEPD	WEPD	YEPD	MILK	MARB	REA
57	+14	-0.2	+62	+107	+27	+0.53	+0.47

\$Values			
\$W: 65.60	\$F: 78.17	\$G: 34.96	\$B: 127.23

79
ANGUS
Powered by Neogen GenScan

- Calving Ease Bull
- IMF ratio 122 REA ratio 101
- Dams Production Record: Weaning 4@112 Yearling 4@108 IMF 16@107 REA 16@102



Bear Mtn Cowboy Up 7845

Tattoo: 7845 Calved: 09/18/17 Reg No: 19186106

HA Outside 3008
HA Cowboy Up 5405
HA Blackcap Lady 1602

80
ANGUS
Powered by Neogen GenScan

S A V Bismarck 5682
Bear Mtn Forever Lady 0001
B/F Forever Lady 46P 7P 104T

\$Values	
\$W:	79.01
\$F:	101.04
\$G:	12.86
\$B:	147.27

BW	CED	BEPD	WEPD	YEPD	MILK	MARB	REA
75	+8	+2.5	+72	+121	+31	+0.16	+0.50

- REA ratio 111
- Dams Production Record: Weaning 4@112 Yearling 4@108 IMF 16@107 REA 16@102

HA COWBOY UP 5405

Birth Date: 1/30/15 Tattoo: 5405 Reg. 18286467

KG Solution 0018
HA Outside 3008
HA Ever lady 1575
Sitz Upward 307R
HA Blackcap Lady 1602
HA Blackcap Lady 5515

\$ Values	
\$W:	+48.85
\$F:	+111.85
\$G:	+26.28
\$B:	+161.66

CED	BW	WW	YW	Milk	SC	CW	Marb	RE	Fat
+8	+2.5	+76	+138	+10	+1.33	+62	+0.33	+0.54	-0.11



Reference Sire

Coming 2 Year Olds



Lot 81



Bear Mtn Whitlock 7853

Tattoo: 7853 Calved: 09/20/17 Reg No: 19187287

S Chisum 6175

S Whitlock 179

S Pride Anna 709

Connealy Consensus 7229

Bear Mtn Miss Manor 4237

Stevenson Miss Manor 83S4

83



\$Values

\$W:	76.00
\$F:	71.94
\$G:	38.75
\$B:	142.97

BW	CED	BEPD	WEPD	YEPD	MILK	MARB	REA
73	+9	+0	+68	+122	+28	+0.74	+0.49

- Calving Ease Bull • Birth ratio 96 IMF ratio 111
- Dams Production Record: Birth 2@100 IMF 2@132
- This bull is extremely gentle.



Bear Mtn Whitlock 7855

Tattoo: 7855 Calved: 09/21/17 Reg No: 19187297

S Chisum 6175

S Whitlock 179

S Pride Anna 709

S A V Potential 0205

Bear Mtn Blackbird 2110

Top Line Blackbird 1007

81

\$Values

\$W:	63.44
\$F:	100.21
\$G:	22.55
\$B:	165.31

BW	CED	BEPD	WEPD	YEPD	MILK	MARB	REA
80	+7	+2.0	+72	+129	+25	+0.29	+0.78

- He will have genomically enhanced epd's by sale day.
- Weaning ratio 109 Yearling ratio 108 REA ratio 109
- Dams Production Record: Weaning 3@109 Yearling 3@109 REA 3@108



Bear Mtn Whitlock 7804

Tattoo: 7804 Calved: 09/08/17 Reg No: 19187291

S Chisum 6175

S Whitlock 179

S Pride Anna 709

MRCC Reward 002

Bear Mtn Lady Eraline 3262

Bear Mtn Lady Eraline 1240

84

\$Values

\$W:	53.38
\$F:	72.24
\$G:	16.25
\$B:	127.97

BW	CED	BEPD	WEPD	YEPD	MILK	MARB	REA
60	+12	-1.2	+60	+108	+23	+0.24	+0.38

- Calving Ease Bull
- Birth ratio 77
- His dam has 3 @ 92 for birth.



Bear Mtn Whitlock 7827

Tattoo: 7827 Calved: 09/15/17 Reg No: 19187314

S Chisum 6175

S Whitlock 179

S Pride Anna 709

Bear Mtn Owyhee 5012

Bear Mtn Barbara 8026

Bear Mtn Barbara 5162

82

\$Values

\$W:	48.61
\$F:	59.70
\$G:	21.63
\$B:	128.94

BW	CED	BEPD	WEPD	YEPD	MILK	MARB	REA
70	+11	-0.6	+52	+95	+24	+0.27	+0.48

- Calving Ease Bull
- Birth ratio 89
- His dam has 8@89 for birth.



Bear Mtn Whitlock 7819

Tattoo: 7819 Calved: 09/13/17 Reg No: 19187290

S Chisum 6175

S Whitlock 179

S Pride Anna 709

GDAR Game Day 449

Bear Mtn Bell 3244

Bear Mtn Bell 1208

85

\$Values

\$W:	58.08
\$F:	75.00
\$G:	23.87
\$B:	145.96

BW	CED	BEPD	WEPD	YEPD	MILK	MARB	REA
75	+8	+0.7	+64	+111	+26	+0.34	+0.58

- Calving Ease Bull
- Birth ratio 96 Weaning ratio 104 Yearling ratio 107 REA ratio 101
- Dams Production Record: Birth 3@100 Weaning 3@100 REA 3@101

Reference Sire



S WHITLOCK 179

Birth Date: 3/21/11

Tattoo: 179

Reg. 17007891

S Alliance 3313

S Chisum 6175

S Gloria 464

R&S Expedition 1404

S Pride Anna 709

S ride Anna 567

\$ Values

\$W:	+70.33
\$F:	+103.46
\$G:	+20.62
\$B:	+163.28

CED	BW	WW	YW	Milk	SC	CW	Marb	RE	Fat
+8	+1.0	+74	+136	+26	+1.11	+74	+0.38	+0.60	+0.058



Lot 86



Bear Mtn Titan 7854

Tattoo: 7854 Calved: 09/21/17 Reg No: 19186109

Connealy In Focus 4925

Bear Mtn Titan 4045

Bear Mtn Blackbird 9024

Bear Mtn Owyhee 5012

Bear Mtn Forever Lady 2206

Boyd Forever Lady 502

\$Values

SW:	76.32
SF:	69.97
SG:	11.89
SB:	131.22

88



BW	CED	BEPD	WEPD	YEPD	MILK	MARB	REA
81	+8	+1.9	+76	+111	+23	+0.07	+0.65

- Weaning ratio 107 Yearling ratio 101 IMF ratio 113 REA ratio 104
- Dams Production Record: Weaning 4@102 Yearling 4@102 REA 4@101



Bear Mtn Titan 7849

Tattoo: 7849 Calved: 09/19/17 Reg No: 19186107

Connealy In Focus 4925

Bear Mtn Titan 4045

Bear Mtn Blackbird 9024

Nichols Extra K205

Bear Mtn Eulima 0028

Bear Mtn Eulima 7419

\$Values

SW:	82.27
SF:	59.13
SG:	45.12
SB:	155.75

86



BW	CED	BEPD	WEPD	YEPD	MILK	MARB	REA
80	+11	-0.3	+68	+101	+31	+0.86	+0.57

- Calving Ease Bull
- Weaning ratio 103 Yearling ratio 105 IMF ratio 139 REA ratio 113
- Dams Production Record: Weaning 5@102 Yearling 4@102 IMF 5@119 REA 5@102



Bear Mtn Titan 7825

Tattoo: 7825 Calved: 09/15/17 Reg No: 19186101

Connealy In Focus 4925

Bear Mtn Titan 4045

Bear Mtn Blackbird 9024

Connealy Capitalist 028

Bear Mtn Enchantress 5210

Bear Mtn Enchantress 3230

\$Values

SW:	53.49
SF:	60.62
SG:	33.55
SB:	126.76

89

BW	CED	BEPD	WEPD	YEPD	MILK	MARB	REA
77	+7	+2.0	+63	+103	+22	+0.51	+0.63

- Weaning ratio 104 Yearling ratio 101 REA ratio 104



Bear Mtn Titan 7839

Tattoo: 7839 Calved: 09/17/17 Reg No: 19186105

Connealy In Focus 4925

Bear Mtn Titan 4045

Bear Mtn Blackbird 9024

Pine Ridge Hammer S322

Bear Mtn Bell 1208

Bear Mtn Bell 8275

\$Values

SW:	66.73
SF:	54.82
SG:	40.50
SB:	121.81

87

BW	CED	BEPD	WEPD	YEPD	MILK	MARB	REA
69	+12	-0.1	+64	+98	+25	+0.72	+0.51

- Calving Ease Bull • Birth ratio 87 Weaning ratio 104 IMF ratio 137
- Dams Production Record: Birth 5@92 Weaning 5@105 IMF 5@117 REA 5@100
- His dam is a Pathfinder.



Bear Mtn Titan 7818

Tattoo: 7818 Calved: 09/13/17 Reg No: 19186097

Connealy In Focus 4925

Bear Mtn Titan 4045

Bear Mtn Blackbird 9024

Bear Mtn George W 1069

Bear Mtn Blackbird 5211

Bear Mtn Blackbird 2110

\$Values

SW:	46.42
SF:	44.90
SG:	29.73
SB:	112.03

90

BW	CED	BEPD	WEPD	YEPD	MILK	MARB	REA
67	+11	+0.5	+54	+91	+20	+0.36	+0.73

- Calving Ease Bull
- Birth ratio 95 REA ratio 111

BEAR MTN TITAN 4045

Birth Date: 1/17/14 Tattoo: 4045 Reg. 17927346

Mytty In Focus
Connealy In Focus 4925
Black Cana of Conanga 206

Twin Valley Precision E161
Bear Mtn Blackbird 9024
EXAR Blackbird 1837

\$ Values

\$W:	+71.64
\$F:	+58.94
\$G:	+39.47
\$B:	+139.37

CED	BW	WW	YW	Milk	SC	CW	Marb	RE	Fat
+12	+0.5	+68	+102	+22	+1.66	+41	+0.70	+0.73	+0.062



Reference Sire

**Bear Mtn Confirmed 7834**

Tattoo: 7834 Calved: 09/16/17 Reg No: 19195100

K C F Bennett Absolute

RB Confirmed 02-4524

R B Lady Standard 305-02

EF Complement 8088

Bear Mtn Enchantress 5218

Bear Mtn Enchantress 3133

91**ANGUS**
Powered by Nogen Genetics

\$Values	
SW:	60.63
SF:	122.13
SG:	30.35
SB:	178.50

BW	CED	BE PD	WE PD	YE PD	MILK	MARB	REA
92	+2	+5.4	+74	+133	+26	+0.50	+0.58

- Weaning ratio 113 Yearling ratio 111 REA ratio 107
- Adj WW 708 Adj YW 1289
- A real performance bull here!

**Bear Mtn Confirmed 7816**

Tattoo: 7816 Calved: 09/12/17 Reg No: 19195097

K C F Bennett Absolute

RB Confirmed 02-4524

R B Lady Standard 305-02

EF Complement 8088

Bear Mtn Barbara 5204

Bear Mtn Barbara 8106

92**ANGUS**
Powered by Nogen Genetics

\$Values	
SW:	47.93
SF:	74.14
SG:	34.97
SB:	147.11

BW	CED	BE PD	WE PD	YE PD	MILK	MARB	REA
81	+3	+2.6	+60	+109	+26	+0.44	+0.74

- His maternal grand dam is a full sister to Owyhee and has a nursing ratio of 6@103.

**Bear Mtn Atlas 7844**

Tattoo: 7844 Calved: 09/18/17 Reg No: 19187489

R B Active Duty 010

Koupals B&B Atlas 4061

B&B Tess 9045

Bear Mtn Cross Wired 9010

Bear Mtn Georgia 4214

Silveiras BMAR Georgia 2203

93**ANGUS**
Powered by Nogen Genetics

\$Values	
SW:	44.82
SF:	61.23
SG:	25.36
SB:	114.78

BW	CED	BE PD	WE PD	YE PD	MILK	MARB	REA
75	+7	+0.9	+57	+101	+19	+0.27	+0.55

- For use on larger framed heifers and cows.
- Birth ratio 99 Yearling ratio 104 IMF ratio 108 REA ratio 109

**Bear Mtn Atlas 7846**

Tattoo: 7846 Calved: 09/18/17 Reg No: 19187491

R B Active Duty 010

Koupals B&B Atlas 4061

B&B Tess 9045

MCATL Pure Product 903-55

Bear Mtn Enchantress 3230

Stevenson Enchantress 449J

94**ANGUS**
Powered by Nogen Genetics

\$Values	
SW:	39.51
SF:	56.97
SG:	20.94
SB:	81.98

BW	CED	BE PD	WE PD	YE PD	MILK	MARB	REA
74	+6	+0.8	+50	+96	+22	+0.30	+0.17

- For use on larger framed heifers and cows.
- Birth ratio 95 IMF ratio 100
- Dams Production Record: Birth 3@98 IMF 3@107

**Bear Mtn Platinum 7807**

Tattoo: 7807 Calved: 09/08/17 Reg No: 19189834

S A V Pioneer 7301

S A V Platinum 0010

S A V Greystone Jamnet 5345

PVF Insight 0129

MF Elba 5327

MF Elba 2220

95**ANGUS**
Powered by Nogen Genetics

\$Values	
SW:	71.56
SF:	79.85
SG:	-7.92
SB:	94.47

BW	CED	BE PD	WE PD	YE PD	MILK	MARB	REA
67	+16	-0.6	+74	+120	+19	-0.17	+0.56

- Calving Ease Bull
- Birth ratio 95

**Bear Mtn Justified 7828**

Tattoo: 7828 Calved: 09/15/17 Reg No: 19187457

Connealy Judgment

KG Justified 3023

KG Miss Magic 1443

Connealy Capitalist 028

Bear Mtn Lady 5223

Bear Mtn Lady 1182

96**ANGUS**
Powered by Nogen Genetics

\$Values	
SW:	64.92
SF:	53.61
SG:	47.69
SB:	115.66

BW	CED	BE PD	WE PD	YE PD	MILK	MARB	REA
73	+6	+1.1	+58	+98	+28	+0.87	+0.60

- For use on larger framed heifers and cows.
- Weaning ratio 102 IMF ratio 126 REA ratio 112
- This bull will make an excellent set of replacement females while producing calves that should excel on a grid.

**Bear Mtn Stonework 7799**

Tattoo: 7799 Calved: 08/27/17 Reg No: 19186088

Connealy Black Granite

Bear Mtn Stonework 5152

Bear Mtn Barbara 8106

Bear Mtn George W 1069

Bear Mtn Blackette Lady 4173

Bear Mtn Blackette Lady 1162

97**ANGUS**
Powered by Nogen Genetics

\$Values	
SW:	60.28
SF:	59.44
SG:	20.25
SB:	122.62

BW	CED	BE PD	WE PD	YE PD	MILK	MARB	REA
67	+11	+0.7	+55	+98	+32	+0.16	+0.48

- Calving Ease Bull
- Birth ratio 89 Weaning ratio 102 Yearling ratio 103
- His 2nd dam has a nursing ratio of 6@104

**Bear Mtn Stonework 7809**

Tattoo: 7809 Calved: 09/09/17 Reg No: 19186732

Connealy Black Granite

Bear Mtn Stonework 5152

Bear Mtn Barbara 8106

Bear Mtn George W 1069

Bear Mtn Jamie 4167

Bear Mtn Jamie 4238

98**ANGUS**
Powered by Nogen Genetics

\$Values	
SW:	62.85
SF:	51.77
SG:	25.57
SB:	129.64

BW	CED	BE PD	WE PD	YE PD	MILK	MARB	REA
68	+11	+0.7	+54	+89	+31	+0.42	+0.47

- Calving Ease Bull
- Birth ratio 90 IMF ratio 131
- His maternal grand dam is a Pathfinder.



Bear Mtn Resource 7725

Tattoo: 7725 Calved: 03/12/17 Reg No: 18922992

S A V Resource 1441
BT Resource 1345
 RAF Miss Burgess 001
 Vin-Mar O'Reilly Factor
Bear Mtn Blackbird 3038
 Bear Mtn Blackbird 0225

\$Values	
\$W:	55.69
\$F:	81.18
\$G:	29.11
\$B:	163.19

99

BW	CED	BEPD	WEPD	YEPD	MILK	MARB	REA
82	+5	+2.1	+63	+116	+25	+0.36	+0.75

- Birth ratio 100 Weaning ratio 99 REA ratio 109
- Dams Production Record: Weaning 3@102 Yearling 2@103 REA 3@110



Bear Mtn Resource 7774

Tattoo: 7774 Calved: 04/02/17 Reg No: 19010709

S A V Resource 1441
BT Resource 1345
 RAF Miss Burgess 001
 Connealy Confidence 0100
Bear Mtn Enchantress 4018
 Stevenson Enchantress 449J

\$Values	
\$W:	45.25
\$F:	71.47
\$G:	32.54
\$B:	151.65

101



BW	CED	BEPD	WEPD	YEPD	MILK	MARB	REA
88	+2	+3.0	+61	+114	+18	+0.55	+0.56

- Weaning ratio 102 IMF ratio 159 REA ratio 102
- His dam has 2@137 for IMF.



Bear Mtn Resource 7769

Tattoo: 7769 Calved: 03/29/17 Reg No: 18922998

S A V Resource 1441
BT Resource 1345
 RAF Miss Burgess 001
 VAR Rocky 80029
Bear Mtn Barbara 3007
 Bear Mtn Barbara 8106

\$Values	
\$W:	49.14
\$F:	72.24
\$G:	27.07
\$B:	145.38

100

BW	CED	BEPD	WEPD	YEPD	MILK	MARB	REA
84	+5	+2.1	+60	+108	+25	+0.32	+0.68

- He will have genomically enhanced epd's by sale day.
- Weaning ratio 99 REA ratio 104
- Dams Production Record: Weaning 3@103 Yearling 1@109 IMF 3@101 REA 3@104



Bear Mtn Pure 7687

Tattoo: 7687 Calved: 02/27/17 Reg No: 18886326

K C F Bennett Absolute
Bear Mtn Pure 5023
 Bear Mtn Barbara 1046
 Bear Mtn Renegade 9045
Bear Mtn Ellunas Elite 2044
 Bear Mtn Ellunas Elite 9Z3

\$Values	
\$W:	46.44
\$F:	71.19
\$G:	27.86
\$B:	132.35

102

BW	CED	BEPD	WEPD	YEPD	MILK	MARB	REA
88	1+1	1+3.7	1+64	1+109	1+22	1+0.39	1+0.40

- He will have genomically enhanced epd's by sale day.
- Dams Production Record: Weaning 3@102 Yearling 2@102

BT RESOURCE 1345

Birth Date: 1/16/15 Tattoo: 5022 Reg. 18228169

Rito 707 of Ideal 3407 7075

S A V Resource 1441

S A V Blackcap May 4136

S A V Bismarck 5682

RAF Miss Burgess 001

RAF Miss Burgess 810

\$ Values

\$W:	+65.47
\$F:	+85.42
\$G:	+22.16
\$B:	+140.72

CED	BW	WW	YW	Milk	SC	CW	Marb	RE	Fat
+6	+2.6	+72	+131	+21	+1.12	+63	+0.28	+0.70	+0.027



Reference Sure

Two Year Old Bulls



Top 4% \$F
Top 5% WW, YW & CW
Top 10% \$B



Bear Mtn Genuine 7765

Tattoo: 7765 Calved: 03/27/17 Reg No: 19225127

Connealy Earnan 076E

Bear Mtn Genuine 5022

Bear Mtn Erica 1012

Bear Mtn George W 1069

Bear Mtn Erica 4159

Bear Mtn Erica 801

103

ANGUS
Owned by Angus Australia

SValues	
\$W:	56.88
\$F:	99.79
\$G:	25.94
\$B:	164.19

BW	CED	BEPD	WEPD	YEPD	MILK	MARB	REA
76	+3	+2.3	+72	+126	+13	+0.40	+0.48



Bear Mtn Genuine 7720

Tattoo: 7720 Calved: 03/10/17 Reg No: 18922990

Connealy Earnan 076E

Bear Mtn Genuine 5022

Bear Mtn Erica 1012

Vin-Mar O'Reilly Factor

Bear Mtn Pride 1019

Bear Mtn Pride 9044

104

SValues	
\$W:	45.20
\$F:	85.66
\$G:	28.49
\$B:	149.51

BW	CED	BEPD	WEPD	YEPD	MILK	MARB	REA
82	+4	+2.3	+60	+115	+25	I + 0.41	I + 0.42

• His dam has 1@92 for birth

- He will have genomically enhanced epd's by sale day.
- Birth ratio 99 Weaning ratio 99
- Dams Production Record: Birth 5@99 Weaning 5@100 Yearling 3@102



Two Year Old Bulls

EPDs as of 2/8/19



Stevenson Miss Manor 83S4
Dam of Lot 105



Lot 105



Bear Mtn Sensation 7690

Tattoo: 7690 Calved: 02/28/17 Reg No: 19011803

S A V Registry 2831
S A V Sensation 5615
S A V Blackcap May 4136
S A V 8180 Traveler 004
Stevenson Miss Manor 83S4
Stevenson Miss Manor N145

SValues	
SW:	42.01
SF:	43.17
SG:	25.03
SB:	102.42

105

BW	CED	BEPD	WEPD	YEPD	MILK	MARB	REA
64	1+6	1+1.1	1+48	1+88	1+23	1+0.25	1+0.57

- He will have genomically enhanced epd's by sale day.
- Dams Production Record: Birth 6@98 Weaning 6@101 IMF 33@100 REA 33@104



Bear Mtn Commando 7625

Tattoo: 7625 Calved: 02/08/17 Reg No: 18886291

EF Complement 8088
EF Commando 1366
Riverbend Young Lucy W1470
Connealy In Focus 4925
Bear Mtn Enchantress 5039
Bear Mtn Enchantress 1005

SValues	
SW:	66.07
SF:	65.12
SG:	40.66
SB:	126.09

106

ANGUS^{CS}
Owned by Angus Genetics

BW	CED	BEPD	WEPD	YEPD	MILK	MARB	REA
69	+11	+0.7	+60	+102	+25	+0.61	+0.74

- Calving Ease Bull
- Birth ratio 93



Lot 106



Bear Mtn Enchantress 5039
Dam of Lot 106

Two Year Old Bulls



Bear Mtn Investment 7586

Tattoo: 7586 Calved: 01/29/17 Reg No: 19351946

Connealy Final Product

Sitz Investment 660Z

Sitz Ellunas Elite 656T

Bear Mtn George W 1069

Bear Mtn Barbara 5081

Bear Mtn Barbara 0047

107

\$Values	
SW:	48.44
SF:	74.45
SG:	18.78
SB:	125.96

BW	CED	BEPD	WEPD	YEPD	MILK	MARB	REA
50	I+5	I+0.9	I+57	I+108	I+26	I+0.22	I+0.45

- Calving Ease Bull
- He will have genomically enhanced epd's by sale day.



Bear Mtn Fortress 7644

Tattoo: 7644 Calved: 02/15/17 Reg No: 18886300

Connealy Consensus

K C F Bennett Fortress

Thomas Patricia 9705

Bear Mtn O'Reilly Factor3061

Bear Mtn Blackbird 5187

Bear Mtn Blackbird 1015

111

\$Values	
SW:	45.19
SF:	62.68
SG:	34.39
SB:	105.32

BW	CED	BEPD	WEPD	YEPD	MILK	MARB	REA
72	+10		+55	+101	+21	I+0.42	I+0.47

- He will have genomically enhanced epd's by sale day.
- Calving Ease Bull
- Birth ratio 96



Bear Mtn Investment 7737

Tattoo: 7737 Calved: 03/17/17 Reg No: 18886352

Connealy Final Product

Sitz Investment 660Z

Sitz Ellunas Elite 656T

Circle A Brilliance 1189

Bear Mtn Primrose 4168

Bear Mtn Primrose 2112

108

\$Values	
SW:	49.63
SF:	59.67
SG:	39.53
SB:	134.57

BW	CED	BEPD	WEPD	YEPD	MILK	MARB	REA
76	+8	-0.8	+54	+99	+25	+0.73	+0.36

- He will have genomically enhanced epd's by sale day.
- Calving Ease Bull
- Birth ratio 95 IMF ratio 234(this is correct)
- Adj IMF 6.20
- His dam has 2@95 for birth and 2@160 for IMF.



Bear Mtn Fortress 7694

Tattoo: 7694 Calved: 03/01/17 Reg No: 18886330

Connealy Consensus

K C F Bennett Fortress

Thomas Patricia 9705

Dameron First Impression

Dameron Empress 411

OSU Empress 7165

112

\$Values	
SW:	47.49
SF:	50.28
SG:	33.74
SB:	114.99

BW	CED	BEPD	WEPD	YEPD	MILK	MARB	REA
72	+10	-0.6	+49	+92	+28	I+0.40	I+0.51

- He will have genomically enhanced epd's by sale day.
- Calving Ease Bull
- Birth ratio 90
- His dam has 2@94 for birth.



Bear Mtn Justified 7561

Tattoo: 7561 Calved: 01/23/17 Reg No: 18820491

Connealy Judgment

KG Justified 3023

KG Miss Magic 1443

Bear Mtn Freight Train 350L

Bear Mtn Lady Eraline 0038

Bear Mtn Lady Eraline 7398

109



\$Values	
SW:	70.43
SF:	59.47
SG:	46.18
SB:	112.44

BW	CED	BEPD	WEPD	YEPD	MILK	MARB	REA
76	+11	-1.7	+55	+99	+32	+0.94	+0.19

- Calving Ease Bull
- Dams Production Record: Birth 5@95 Weaning 5@103 Yearling 3@108 REA 4@106



Bear Mtn Insight 7691

Tattoo: 7691 Calved: 02/28/17 Reg No: 18931477

S A V Brilliance 8077

PVF Insight 0129

PVF Missie 790

Vin-Mar O'Reilly Factor

Bear Mtn Jamie 1071

LaGrand Jamie H455

113

\$Values	
SW:	60.82
SF:	94.78
SG:	14.25
SB:	151.43

BW	CED	BEPD	WEPD	YEPD	MILK	MARB	REA
65	I+7	I+1.2	I+62	I+116	I+26	I+0.02	I+1.07

- He will have genomically enhanced epd's by sale day.
- Dams Production Record: Birth 4@97 Weaning 4@114 Yearling 2@112 IMF 2@100 REA 2@103



Bear Mtn O'Reilly Factor7786

Tattoo: 7786 Calved: 04/15/17 Reg No: 18886377

Vin-Mar O'Reilly Factor

Bear Mtn O'Reilly Factor2049

Bear Mtn Forever Lady 0001

Sitz Wisdom 481T

Bear Mtn Barbara 4039

Bear Mtn Barbara 1046

110

\$Values	
SW:	50.15
SF:	64.14
SG:	34.20
SB:	122.19

BW	CED	BEPD	WEPD	YEPD	MILK	MARB	REA
70	+13	-0.4	+53	+101	+29	+0.54	+0.32

- Calving Ease Bull
- Birth ratio 91 Weaning ratio 106 IMF ratio 106
- Adj WW 704
- Dams Production Record: Birth 3@96 Weaning 3@102 Yearling 1@100



Bear Mtn Cashed In 7597

Tattoo: 7597 Calved: 02/01/17 Reg No: 18888550

Barstow Cash

Styles Cashed In S8

Styles Pride P302

WK George

Bear Mtn Lassie 4069

RF Lassie 71127

114



\$Values	
SW:	52.30
SF:	99.64
SG:	33.97
SB:	181.51

BW	CED	BEPD	WEPD	YEPD	MILK	MARB	REA
96	+0	+5.5	+74	+120	+22	+0.44	+0.56

- Weaning ratio 106 Yearling ratio 104 IMF ratio 107
- Adj WW 761 Adj YW 1305
- Dams Production Record: Weaning 3@100 Yearling 1@104 IMF 1@107
- His dam is a full sister to George W.



Bear Mtn Assurance Plus 7789

Tattoo: 7789 Calved: 04/20/17 Reg No: 18886378

Connealy Confidence 0100

Bartels Assurance Plus

Cappa Plus2013 0016 Bartels

Bear Mtn Factor 1049

Bear Mtn Blackbird 5161

Bear Mtn Blackbird 1200

115

\$Values	
\$W:	45.91
\$F:	89.66
\$G:	20.99
\$B:	139.77

BW	CED	BEPD	WEPD	YEPD	MILK	MARB	REA
82	+1	+3.5	+65	+119	+24	+0.18	+0.81

- He will have genomically enhanced epd's by sale day.
- Weaning ratio 107 REA ratio 110
- Adj WW 711
- His dam has 2@103 for weaning and 1@110 for REA.



Bear Mtn Assurance Plus 7745

Tattoo: 7745 Calved: 03/19/17 Reg No: 18886357

Connealy Confidence 0100

Bartels Assurance Plus

Cappa Plus2013 0016 Bartels

Bear Mtn Game Day 0146

Bear Mtn Primrose 5171

Bear Mtn Primrose 2112

117

\$Values	
\$W:	48.38
\$F:	56.66
\$G:	23.05
\$B:	111.67

BW	CED	BEPD	WEPD	YEPD	MILK	MARB	REA
63	+13	-1.7	+53	+97	+23	1+0.22	1+0.70

- Calving Ease Bull
- Birth ratio 86 Weaning ratio 99



Bear Mtn Assurance Plus 7693

Tattoo: 7693 Calved: 02/28/17 Reg No: 18886329

Connealy Confidence 0100

Bartels Assurance Plus

Cappa Plus2013 0016 Bartels

Connealy Capitalist 028

Bear Mtn Barbara 5086

Bear Mtn Barbara 3007

116

\$Values	
\$W:	51.54
\$F:	61.23
\$G:	21.73
\$B:	115.08

BW	CED	BEPD	WEPD	YEPD	MILK	MARB	REA
74	+9	+0.4	+57	+101	+25	+0.20	+0.75

- Calving Ease Bull
- Birth ratio 99 Weaning ratio 99 REA ratio 104
- His dam has a nursing ratio of 2@102.



Mckinley can't wait to sell girl scout cookies at the sale!

BARTELS ASSURANCE PLUS

Birth Date: 1/21/14 Tattoo: 407 Reg. 18023204

Connealy Tobin
Connealy Confidence 0100
Becka Gala of Conanga 8281

Connealy Final Solution
Cappa Plus2013 0016 Bartels
Black Cappa 6040 0016 Bartel

\$ Values	
\$W:	+64.31
\$F:	+97.01
\$G:	+18.94
\$B:	+142.87

CED	BW	WW	YW	Milk	SC	CW	Marb	RE	Fat
+10	-0.2	+64	+122	+25	+0.95	+52	+0.15	+0.94	+0.026



Reference Sire

Two Year Old Bulls



SQ Rita 128R of 3540 E161
Maternal Grand Dam of Lot 118



Bear Mtn Foundation 7784

Tattoo: 7784 Calved: 04/14/17 Reg No: 18886375

Musgrave Foundation
Musgrave Foundation 874-870
SA Barbara 870-487

Connealy Confidence 0100
Bear Mtn Rita 4128
SQ Rita 128R of 3540 E161

\$Values	
\$W:	60.51
\$F:	65.52
\$G:	27.01
\$B:	108.63

118

BW	CED	BEPD	WEPD	YEPD	MILK	MARB	REA
70	+11	-0.8	+62	+107	+24	+0.34	+0.57

- He will have genomically enhanced epd's by sale day.
- Calving Ease Bull
- Birth ratio 91 Weaning ratio 108 IMF ratio 100 REA ratio 108
- Adj WW 720
- Dams Production Record: Birth 3@100 Weaning 3@100 IMF 2@109 REA 2@104



Bear Mtn RRS Foundation 7766

Tattoo: 7766 Calved: 03/28/17 Reg No: 18888740

Musgrave Foundation
Musgrave Foundation 874-870
SA Barbara 870-487

Bear Mtn Cross Wired 9010
Reagan's Forever Lady 4056
Reagans Forever Lady 2034

\$Values	
\$W:	47.13
\$F:	54.51
\$G:	26.55
\$B:	110.68

120

BW	CED	BEPD	WEPD	YEPD	MILK	MARB	REA
84	+4	+2.1	+56	+97	+24	+0.33	+0.41

- Weaning ratio 100
- His dam has 2@103 for weaning and 1@104 for yearling.



Bear Mtn Foundation 7719

Tattoo: 7719 Calved: 03/10/17 Reg No: 18886344

Musgrave Foundation
Musgrave Foundation 874-870
SA Barbara 870-487

Circle A Brilliance 1189
Bear Mtn Elsiemere 4118
Bear Mtn Elsiemere 2083

\$Values	
\$W:	41.42
\$F:	61.23
\$G:	18.39
\$B:	93.37

119

BW	CED	BEPD	WEPD	YEPD	MILK	MARB	REA
98	-2	+4.7	+57	+101	+28	I+0.17	I+0.33

- He will have genomically enhanced epd's by sale day.
- Weaning ratio 105
- Adj WW 717
- His dam has 3@109 for weaning and 1@105 for yearling.



Lot 120

Mark your calendar

THE COMMERCIAL FEMALE SALE

Saturday, December 14, 2019

*We plan on 500+ head of Fancy Open and Bred heifers carrying Bear Mountain genetics.
If you have high quality females you would like to sell in this sale please let us know.
We have purchased a number of open heifers from our customers to breed and sell.
We plan to continue this so let us know when you are selling.*

Bear Mountain Angus would like to extend a special thanks to the following for their assistance with the Tri-Tip Dinner!



Mike Prescott - Mix 30
217-787-4200



Jon Hidy & Rich Bernt
308-334-5236



Dustin Weiss - Farm Bureau Ins.
308-883-5697



Kenny Prinz - Commodities Solutions Inc
402-719-1496

Mizer Milling
Jeff Mizer
785-626-5261



Nick Ketzner
785-734-7065

Bear Mountain Angus would like to extend a special thanks to the following for their assistance with this sale...

the Anderjaska family, Travis & Kelli Chrisman, Hazel Bobinmyer, TJ Bobinmyer, Blake Gigax, Bill Cappel, Kevin Keyes family, Jeremy Martin, Reese West, Carolyn Greer, the Shad Wiese family, Kelly Doetker

Bear Mountain Angus Ranch

The future at Bear Mountain Angus...

BEAR MTN PURE 5023

Birth Date: 1/16/15 Tattoo: 5023 Reg. 18228170

S A V Final Answer 0035
K C F Bennett Absolute
 Thomas Miss Lucy 5152

 Pine Ridge Hammer S322
Bear Mtn Barbara 1046
 Bear Mtn Barbara 8106



CED	BW	WW	YW	Milk	SC	CW	Marb	RE	Fat	\$W	\$F	\$G	\$B
+3	+3.1	+82	+143	+21	+1.65	+63	+0.44	+0.48	+0.027	+79.66	+119.31	+27.22	+167.09

WAR KEVLAR

Birth Date: 2/18/17 Tattoo: E125 Reg. 19021611

KM Broken Bow 002
WAR Bullet Proof C357
 WAR Final Answer X020 U182

 S A V Brilliance 8077
WAR Brilliance B009 Z325
 WAR Upgrade Z325 W038



CED	BW	WW	YW	Milk	SC	CW	Marb	RE	Fat	\$W	\$F	\$G	\$B
+7	+0.7	+73	+123	+31	+1.41	+53	+0.68	+0.47	+0.049	+79.19	+95.61	+35.48	+163.45

BEAR MTN INTUITION 7729

Birth Date: 3/14/17 Tattoo: 7729 Reg. 18931480

S A V Brilliance 8077
PVF Insight 0129
 PVF Missie 790

 Vin-Mar O'Reilly Factor
Bear Mtn Jamie 1071
 LaGrand Jamie H455



CED	BW	WW	YW	Milk	SC	CW	Marb	RE	Fat	\$W	\$F	\$G	\$B
+0	+3.5	+74	+129	+15	+1.18	+65	+0.16	+1.03	-0.005	+53.16	+111.53	+21.08	+172.99

Bear Mountain Angus Ranch



BEAR MTN STRONGHOLD

Birth Date: 1/22/17 Tattoo: 7550 Reg. 18886242

Connealy Consensus
K C F Bennett Fortress
 Thomas Patricia 9705

Bear Mtn Owyhee 5012
Bear Mtn Forever Lady 1220
 Boyd Forever Lady 502

CED	BW	WW	YW	Milk	SC	CW	Marb	RE	Fat	\$W	\$F	\$G	\$B
+14	-0.6	+78	+130	+24	+1.68	+44	+0.48	+0.60	+0.009	+83.72	+98.40	+34.54	+142.76



BEAR MTN JUSTIFY

Birth Date: 1/31/17 Tattoo: 7596 Reg. 18886273

Connealy Judgment
KG Justified 3023
 KG Miss Magic 1443

S A V Pioneer 7301
Bear Mtn Judy 3092
 Bear Mtn Judy 0133

CED	BW	WW	YW	Milk	SC	CW	Marb	RE	Fat	\$W	\$F	\$G	\$B
+8	+0.2	+76	+142	+36	+1.55	+41	+0.74	+0.62	+0.045	+88.62	+118.13	+41.16	+144.24



4M-FORTRESS 734

Birth Date: 1/19/17 Tattoo: 734 Reg. 18895921

Connealy Consensus
K C F Bennett Fortress
 Thomas Patricia 9705

Sitz Upward 307R
4M Blackbird 2004
 Riverbend Blackbird 4301

CED	BW	WW	YW	Milk	SC	CW	Marb	RE	Fat	\$W	\$F	\$G	\$B
+9	+1.8	+77	+132	+24	+1.08	+39	+0.63	+0.95	-0.027	+75.76	+100.69	+46.12	+143.89

The future at Bear Mountain Angus...



Bear Mountain Angus
35789 Hwy 6
Palisade, NE 69040

Prsrt
First Class
U.S. Postage Paid
St. Joseph, MO
Permit #2017

FIRST CLASS MAIL

Address Service Requested



www.superiorclicktobid.com



Lot 67



Lot 69



Lot 1



Lot 38

www.bearmountainangus.com